

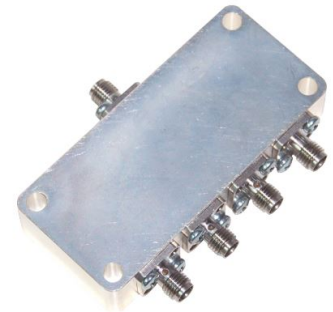
## Product Data



# 1000-1700 MHz 4-way GPS Divider (Model: AMA-2251-1400-4MS)

### Description

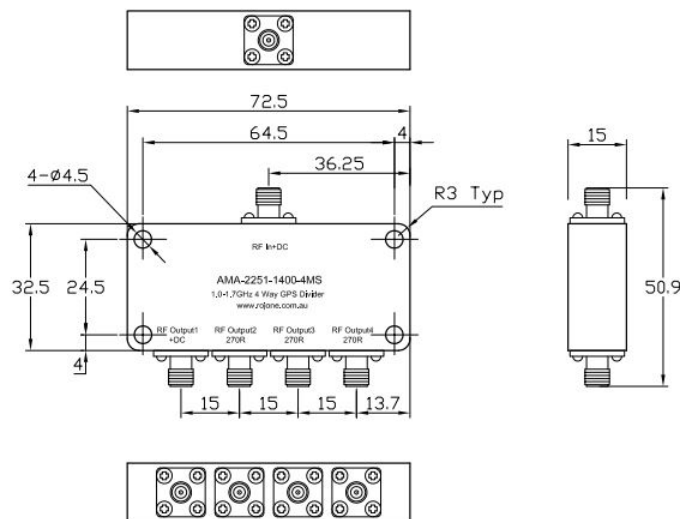
AMA-2251-1400-4MS is a high performance four-way GPS divider, which covers all GPS and GLONASS bands from 1.0-1.7 GHz, such as L1, L2, L3, L5 and L7 bands.



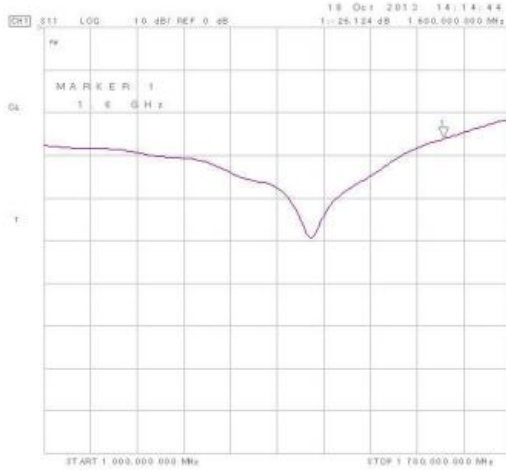
DC supply from the GPS receiver can go through one output port while the other outputs are DC loaded with a 270 Ohm resistor for each port. The isolation between any two outputs is greater than 20dB,

### Specifications

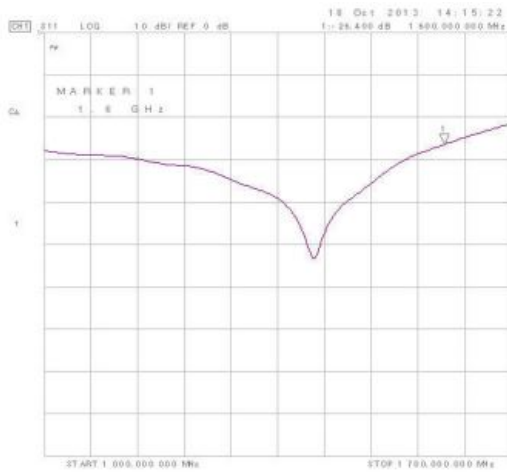
<b>Frequency</b>	1000-1700 MHz
<b>Output Return Loss</b>	> 12 dB (18 dB typical)
<b>Input Return Loss</b>	> 18 dB (25 dB typical)
<b>Isolation</b>	> 18 dB (25 dB typical)
<b>Through Loss</b>	6.5 dB (typical)
<b>Connectors</b>	SMA Female
<b>Impedance</b>	50 Ohms
<b>Input RF power</b>	10 W maximum
<b>Operating Temperature</b>	-30°C to 80°C
<b>Humidity</b>	< 95% no condensing
<b>Weight</b>	85g approx.
<b>Size</b>	72.5 x 50.9 x 15 mm



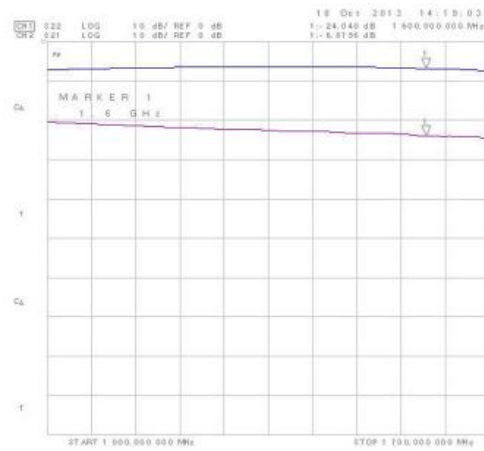
## Test Results (Typical)



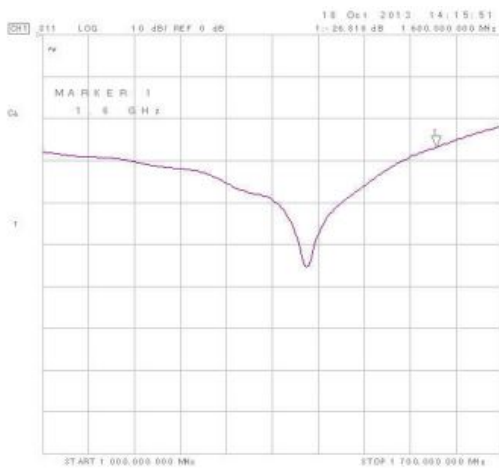
Port 1 Input Return Loss



Port 2 Input Return Loss



Through Loss (Port 1 to Port 2);  
Output Return Loss (Port 2)



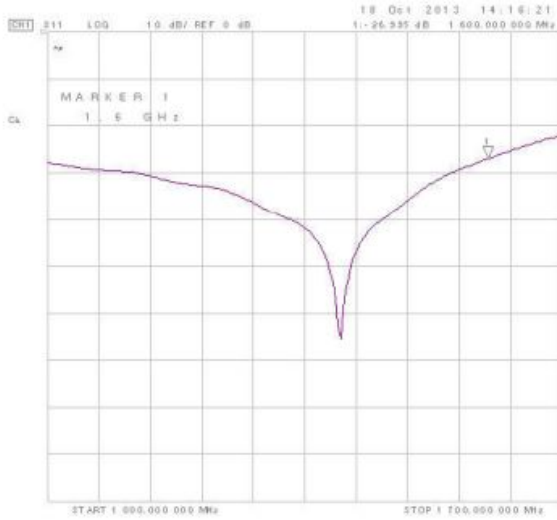
Port 3 Input Return Loss



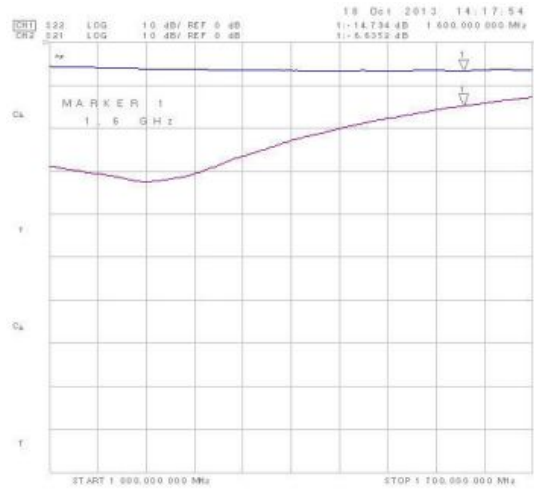
Through Loss (Port 1 to Port 3);  
Output Return Loss (Port 3)

Proudly one of Australia's top 100 Professional & Military Electronics, GPS, RF & Telecommunications companies

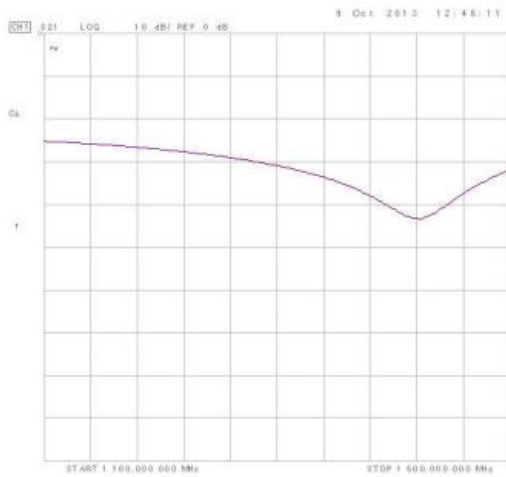
**Test Results (Typical, continued)**



Port 4 Input Return Loss



Through Loss (Port 1 to Port 4);  
Output Return Loss (Port 4)



Isolation - Port 1 & 2



Isolation - Port 1 & 3



Isolation - Port 1 & 4

Proudly one of Australia's top 100 Professional & Military Electronics, GPS, RF & Telecommunications companies