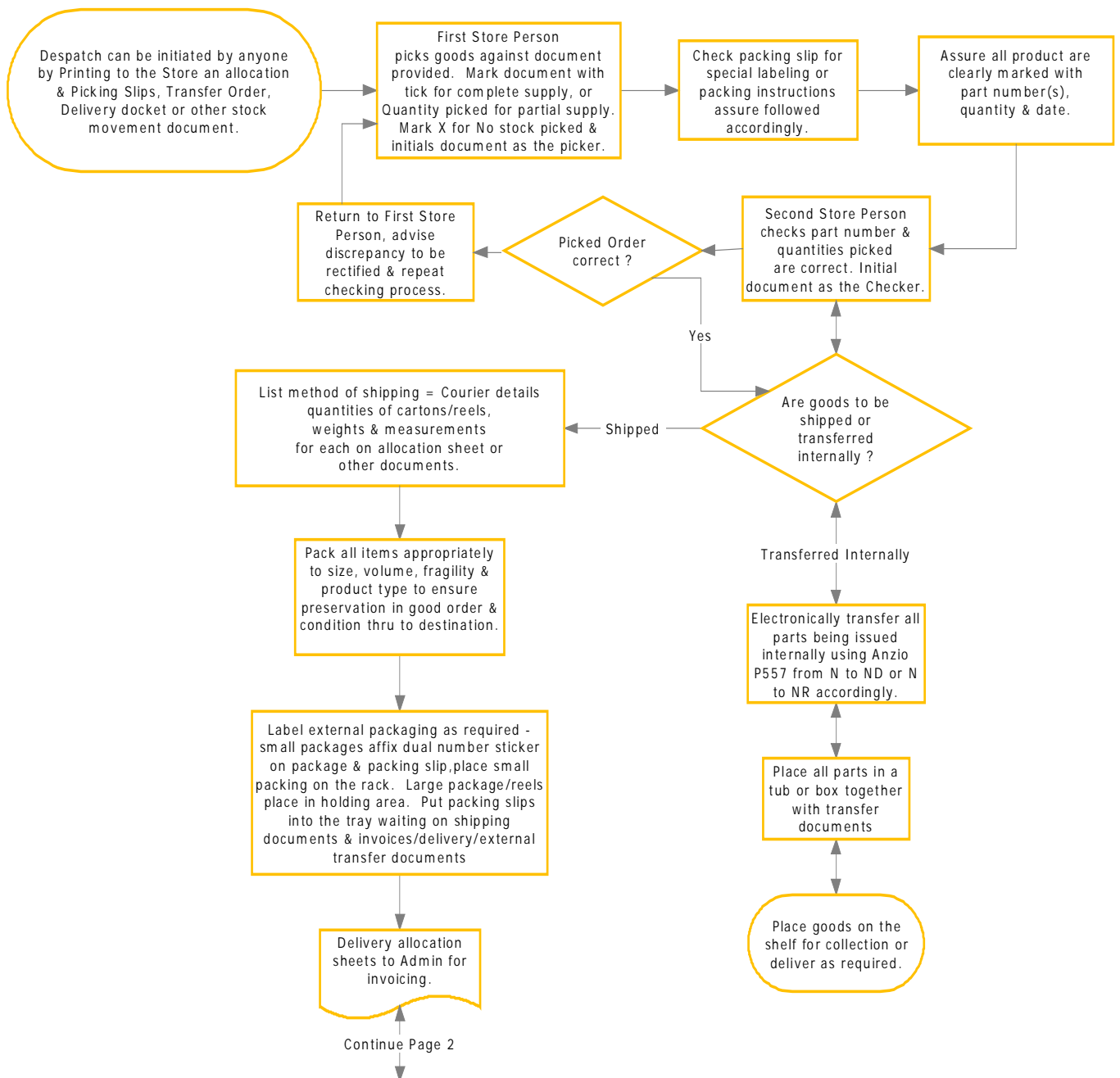


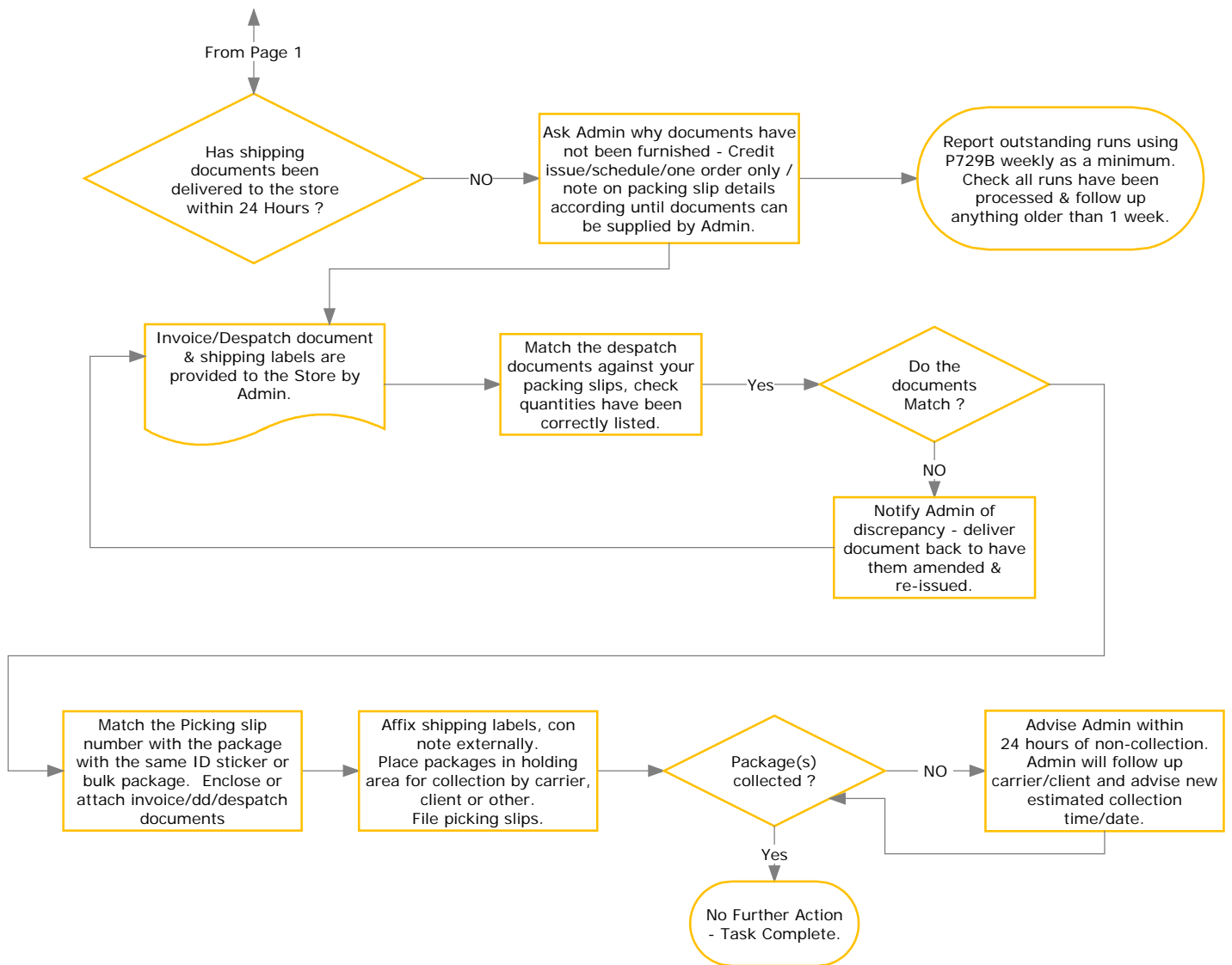
Quality Management System Procedure

Procedure: Dispatch Procedure

Purpose: To carefully check all goods dispatched from Rojone to customers against accompanying picking documents &/or invoices or delivery docketts.

Scope: Applicable to all goods despatched by Rojone.





Reference:

- Customer order Picking Run: P721
- Allocation form: P722B
- Packing Slip: P724C
- Delivery Docket: P715
- Outstanding Run Report: P729B
- Manual Stock Transfer internal location: P557
- Stock Transfer external location: P554A

Legend:

- Yellow - Store