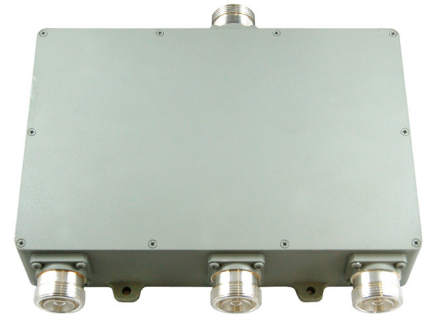




GSM900(Next G)/GSM1800/3G Triplexer (Model: AMA-4253)

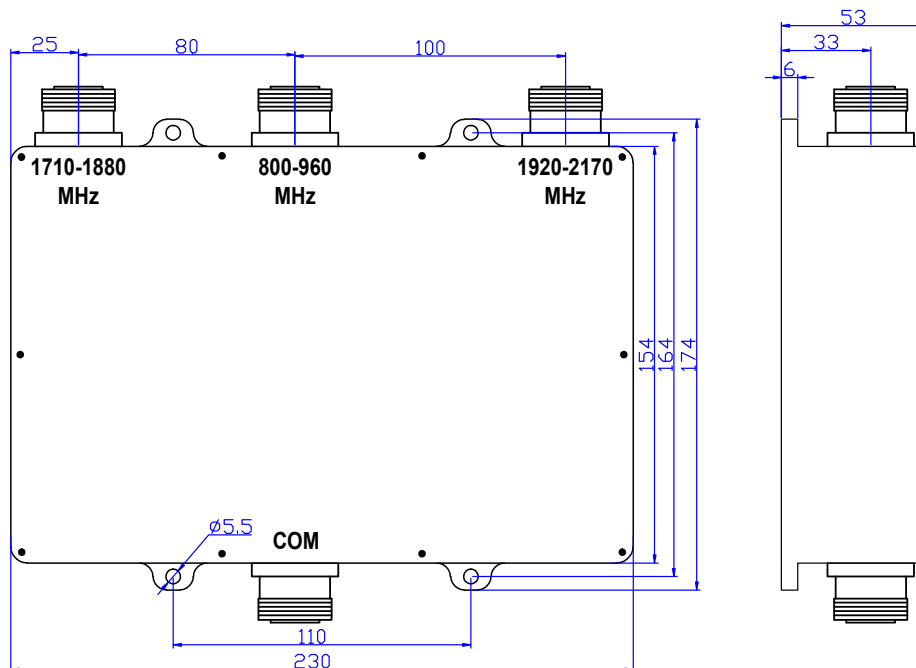


Description

AMA-4253 is a low loss, low PIM, high rejection triplexer, specially designed for NEXT-G (800) / GSM900 / 1800 and 3G systems.

Specifications

Frequency Range	Access 1: GSM900 (Next G): 800-960 MHz Access 2: GSM1800: 1710-1880 MHz Access 3: 3G: 1920-2170 MHz
Insertion Loss	Access 1: 0.2 dB typical Access 2: 0.3 dB typical Access 3: 0.3 dB typical
Ripple	Access 1: 0.2 dB typical Access 2: 0.3 dB typical Access 3: 0.3 dB typical
Rejection	GSM900 (Next G): ≥ 80 @ 1710-2170 MHz GSM1800: ≥ 80 @ 820-960 MHz & 1920-2170 MHz 3G: ≥ 80 @ 820-960 MHz & 1710-1880 MHz
VSWR	≤ 1.3
Intermodulation	≤ -150 dBc @ +43 dBm x 2
Power	100 Watts
Impedance	50 Ohms
RF Connector	DIN 7/16 Female
Size	230mm x 174mm x 53mm

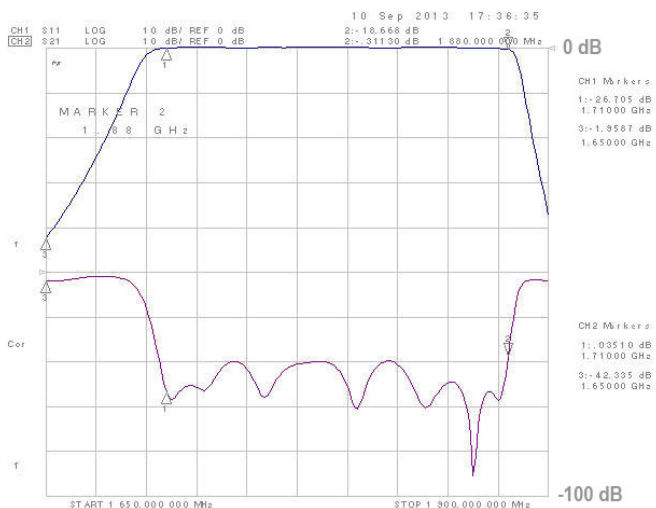




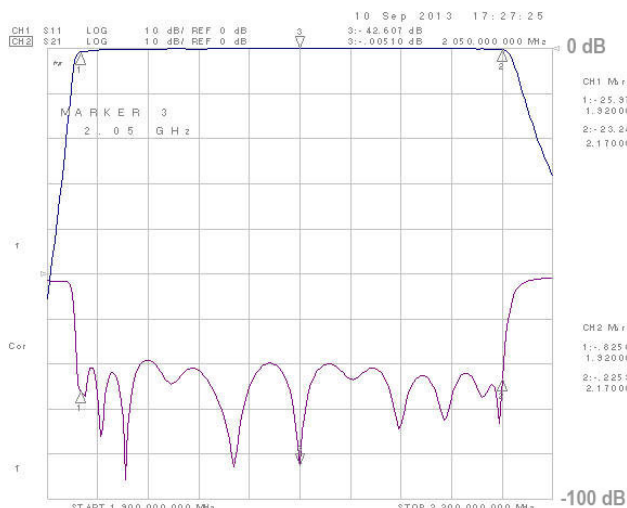
Test Results

Model: AMA-4253

1.71 – 1.88 GHz



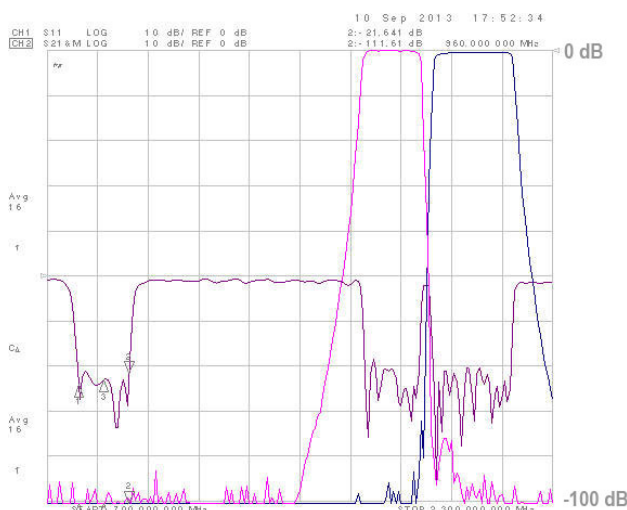
1.92 – 2.17 GHz



800 – 960 MHz



GSM1800 – 3G



GSM900 – GSM1800 - 3GHz

