
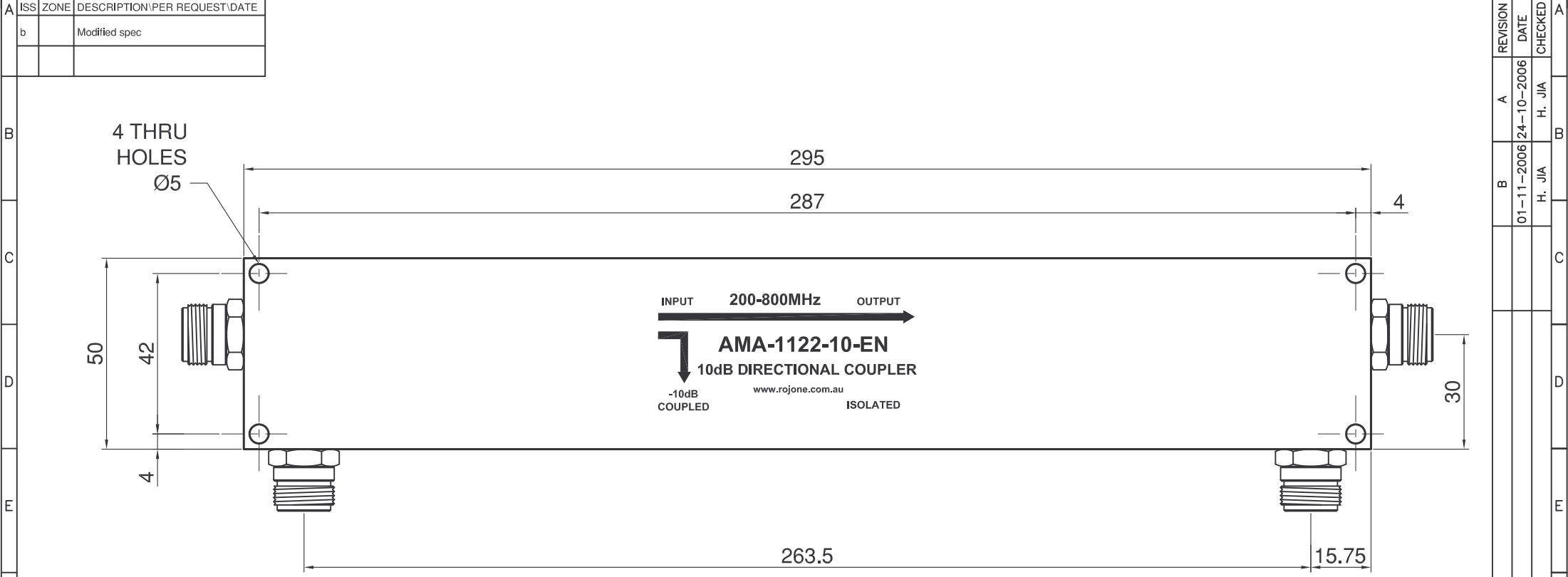


REVISIONS			
ISS	ZONE	DESCRIPTION/PER REQUEST/DATE	
b		Modified spec	

3rd ANGLE PROJECTION  THIS DOCUMENT AND THE DESIGN SHOWN THEREON IS THE PROPERTY OF ROJONE PTY LTD AND MUST NOT BE SOLD, LENT, GIVEN AWAY, COPIED, REPRODUCED OR OTHERWISE DIVULGED TO ANY THIRD PARTY OR USED FOR MANUFACTURE, OR ANY OTHER PURPOSE WITHOUT DIRECT WRITTEN PERMISSION OF ROJONE PTY LTD.

DO NOT SCALE



REVISION	DATE	CHECKED
A	24-10-2006	H. JIA
B	01-11-2006	H. JIA

SPEC
for AMA-1122-10-EN


- Frequency Range: 200-800MHz
- Coupling: 10dB Typ
- Isolation: 40dB Typ
- Directivity: >27dB
- Input Rtn Loss: <-30dB
- Output Rtn Loss: <-27dB
- RF Input Power: 200W Max
- Op Temperature: -40 to 70°C
- Humidity: 100%
- Connector: N-F
- Weight: 1.2Kg (Brass - Environment Version)

Usable Band

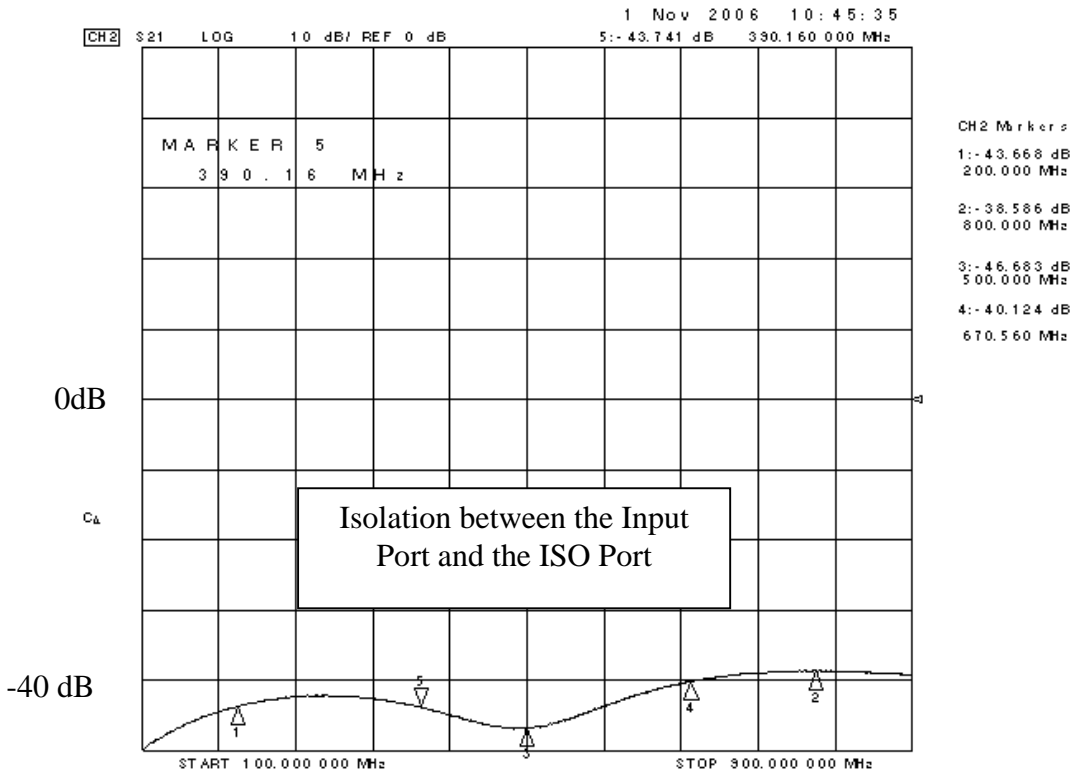
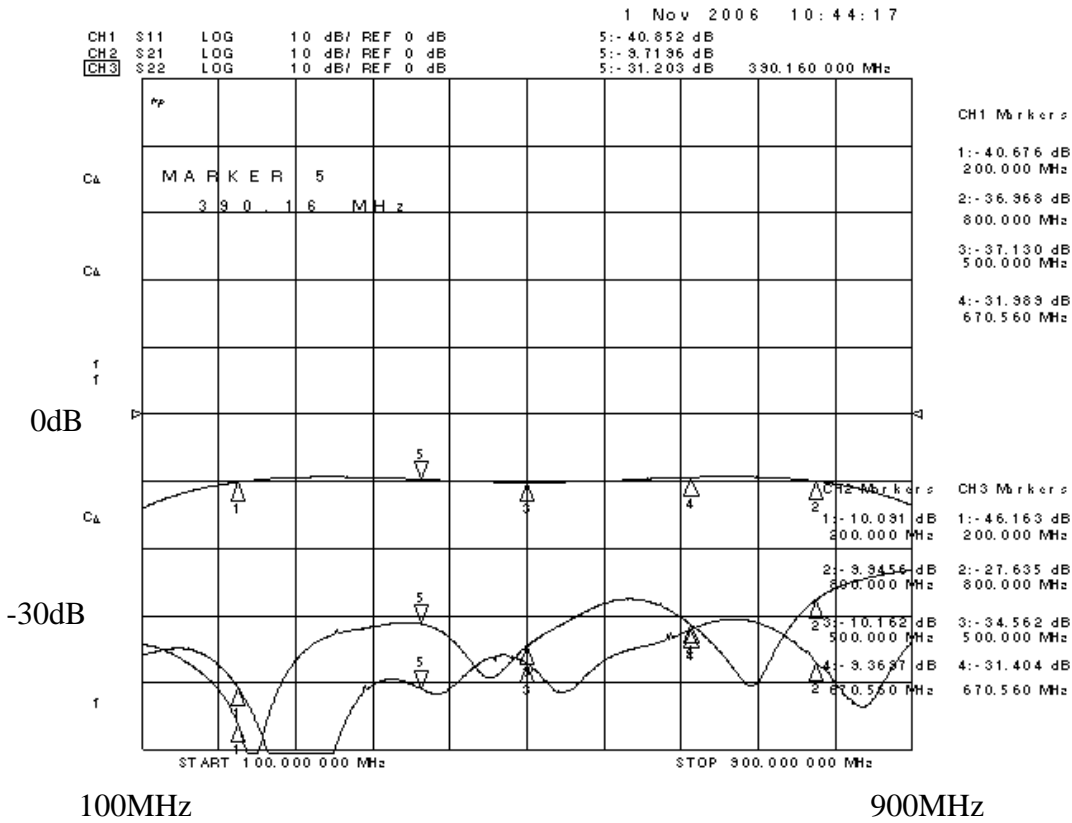
- | | | |
|------------------|--------------|--------------|
| Frequency Range: | 1200-1800MHz | 2200-2700MHz |
| Coupling: | -10dB Typ | -10dB Typ |
| Isolation: | 27-30dB | 18dB |
| Input Rtn Loss: | <-20dB | <-15dB |

Note: Test results are attached in PDF.

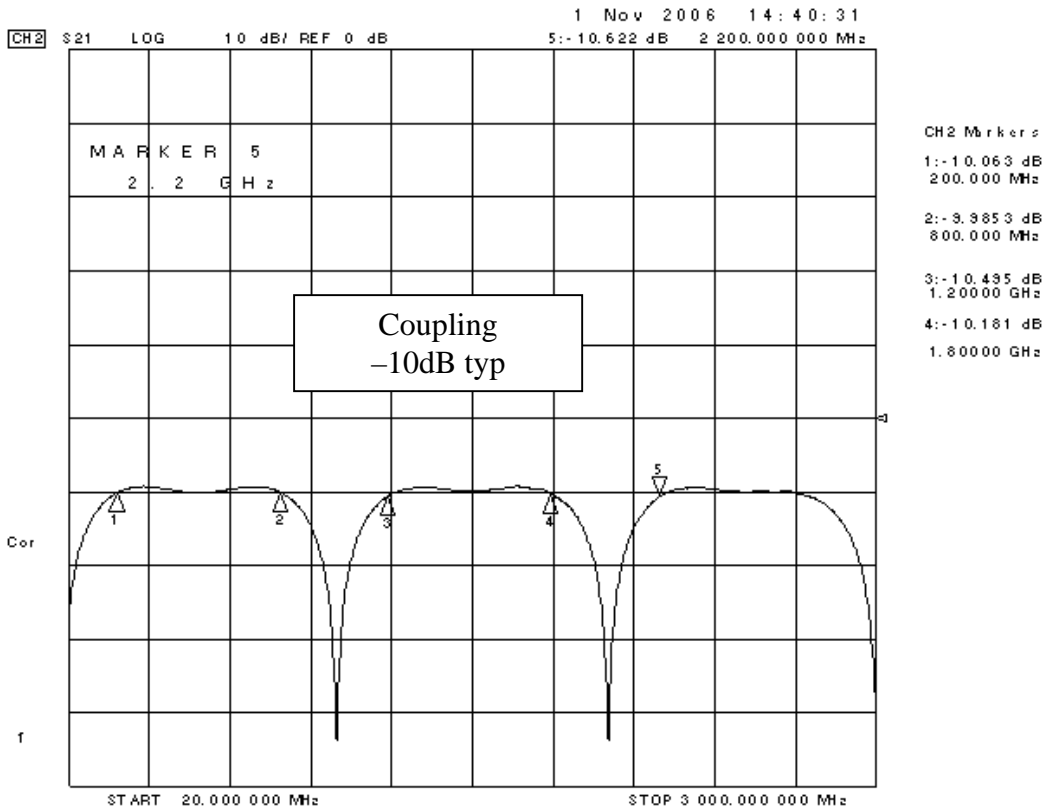
UNLESS OTHERWISE STATED ALL DIMENSIONS ARE IN MILLIMETRES (mm) TOLERANCE: LINEAR ±0.1 ANGULAR ±1° REMOVE ALL BURRS AND SHARP EDGES

 ROJONE PTY LTD ACN 002691241 81 AERO RD INGLEBURN 2565 SYDNEY, AUSTRALIA Ph: (612) 9829 1555 Fax: (612) 9605 8812 Web: www.rojone.com.au E-mail: sales@rojone.com.au	TITLE 200-800MHz COUPLER AMA-1122-10-EN INTERFACE DRAWING	
	DRWG No: 001001100024	
MATERIAL N/A	DRAWN Y. GU	SCALE 1:1 SHEET 1 OF 1
FINISH N/A	CHECKED H. JIA APPROVED B. G.	FILENAME 001001100024ISSB.DWG

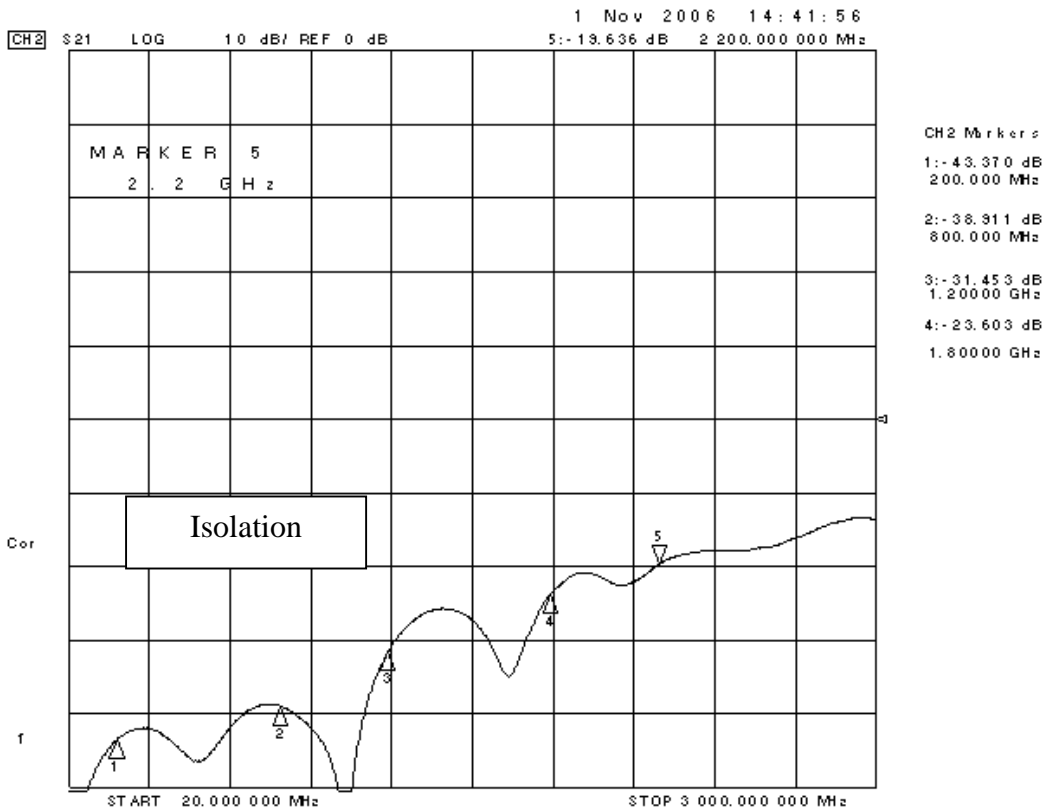
A3



Test Results for AMA-1122-10 Directional Coupler
 1st prototype

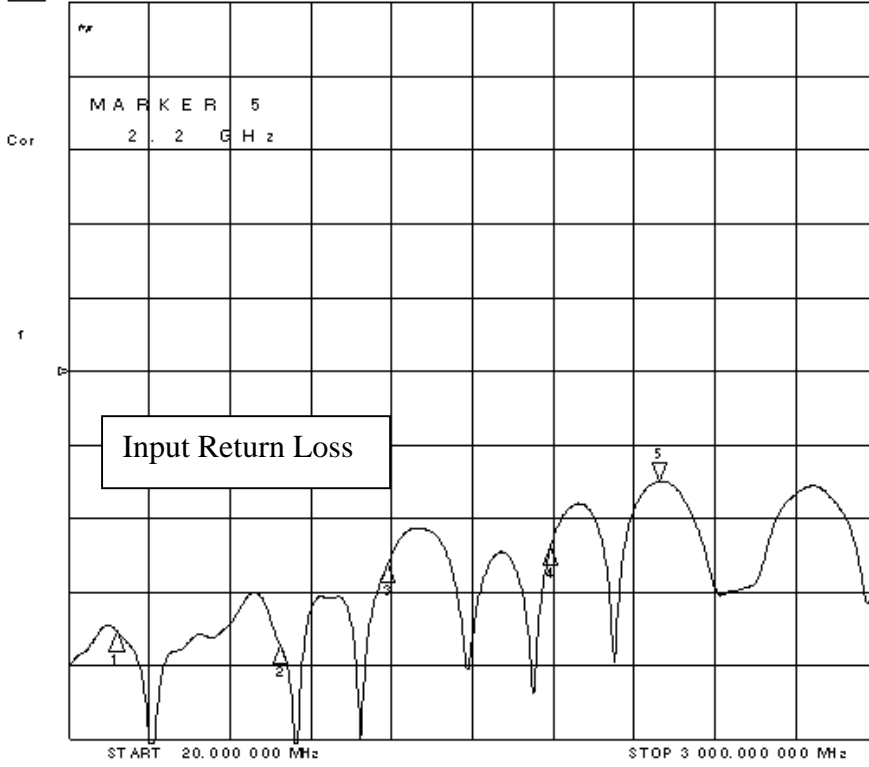


Multi-band performance of AMA-1122-10 Coupler



1 Nov 2006 14:40:52

CH1 S11 LOG 10 dB/ REF 0 dB 5:-14.925 dB 2 200.000 000 MHz



CH1 Markers

1:-35.296 dB
200.000 MHz

2:-37.084 dB
800.000 MHz

3:-25.856 dB
1.20000 GHz

4:-23.669 dB
1.80000 GHz