

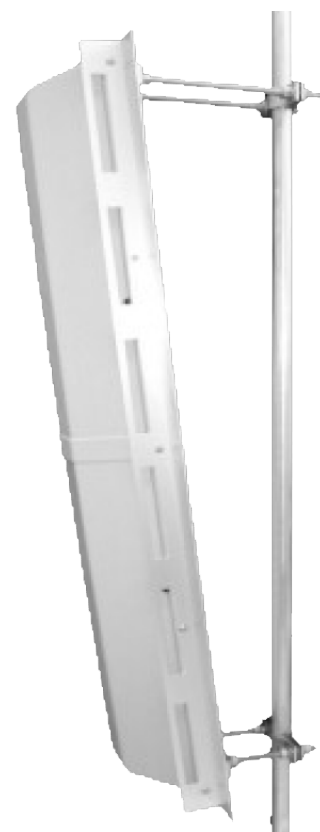


902-928 MHz 20 dB 90° Sector Panel Wireless LAN Antenna (Model: A-TA-926H-8-90)

Description

The A-TA-926H-8-90 is a horizontally polarised 90 degree sectoral antenna.

It consists of a broadband dipole array on an aluminium base with a UV stabilised ASA radome for superior weatherability. The antenna is at DC ground to aid in lightning protection.



Electrical Specifications

Frequency Range	902-928 MHz
Gain	13 dBd
VSWR	1.5:1 max.
Polarisation	Horizontal
Horizontal Beam Width	11°
Vertical Beam Width	90°
Electrical Downtilt	0°
Front-to-back ratio	15 dB min.
Power	200W
Impedance	50 Ohm nominal
Explicit Polarisation	20 dB min.
Connector	N Female
Lightning Protection	DC ground

Mechanical Specifications

Weight	48 lb. (21.8 kg)
Dimensions	76 x 13.5 x 8 inch (1930 x 343 x 203 mm)
Horizontal Thrust	445 lb. (202 kg)
Mechanical Tilt	0 - 7.5°
Rated Wind Velocity	125 mph (200 km/h)
Mounting Pipe	1.75 - 4.5 inches (44.5 - 102 mm)

Material Specifications

Radiating Elements	Plated copper on PCB
Reflector	Iridited aluminium
Radome	Grey UV stabilised ASA
Clamps	EDZ steel

