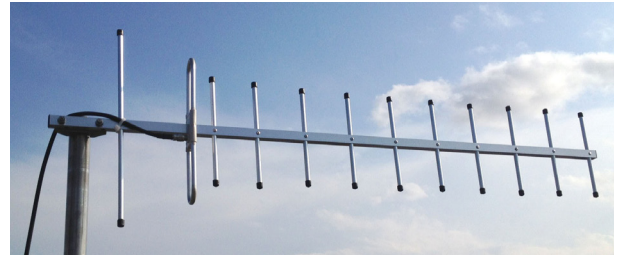




470-625MHz 12dBi Wideband Yagi Antenna

(Model: A-Y470-625-12DBI)



Description

A-Y470-625-12DBI is a 12dBi wide band Yagi antenna, which covers frequency from 470 to 625MHz band, with VSWR at < 2:1 and front to back ratio greater than 18dB.

The reliability of the antenna has been improved by reducing the antenna's body weight and wind loading factor thanks to advanced RF matching techniques. This antenna can be used as a vertical polarised or horizontal polarised antenna.

It is an ideal choice for Digital and Analogue radio communication systems.

Specifications

Frequency Range	470 - 625 MHz
Gain	12 dBi typical
Input VSWR	< 2:1
Input RF Power	100 W max.
Radiation Pattern	30° vertical and horizontal
Front to Back Ratio	>18 dB
Mounting Pole	25-35 mm
Operating Temperature	-30°C to +80°C
RF Connector	N Female
Weight	0.3 kg
Size	1040 x 320 mm

