

SY450

Yagi directional antenna, 6.5 dBd gain, 746-960 MHz

- High gain, wide band antenna in the 746-896 MHz range
- Designed for superior performance and versatility, this 6-element yagi fills a variety of applications
- Can be stacked for additional gain

Sinclair's new SY450 broadband yagi antenna has been developed to meet the need for a high gain, broadband, top quality directional antenna in the 746-896 MHz frequency range. The SY450 provides 6.5 dBd gain with a 1.5:1 VSWR over the entire 746-896 MHz band.

Designed for high performance, versatility and ease of installation, the SY450 will fill a wide variety of requirements.

All elements are at DC ground potential for lightning protection.

Model

[SY450-SF1SNM](#)

[SY450-SF2SNM](#)

Description

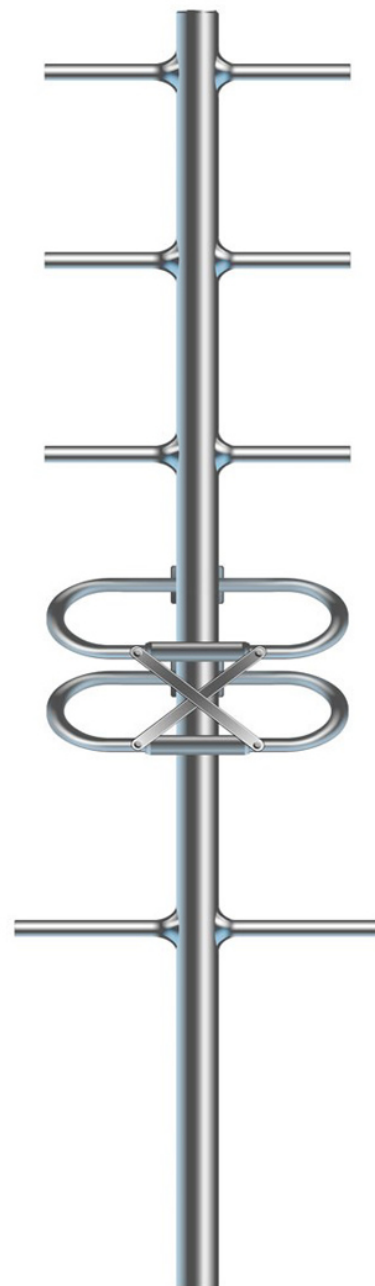
6.5 dBd gain, N (male) connector, 746-896 MHz

6.5 dBd gain, N (male) connector, 806-960 MHz

Pattern

Directional

Directional



Australian Representatives

ROJONE, PTY LTD.

Tel: 02 9829 1555

E: sales@rojone.com.au

www.rojone.com.au

Region	United States	Europe, Middle East and Africa	Caribbean and Latin America	Canada and rest of the world
Telephone	USA: 1 800 263 3275	International: +44 (0) 1223 42 03 03	International: +1 905 726 7676	Canada: 1 800 263 3275 International: +1 905 727 0165
E-mail	salesusa@sinctech.com	salesuk@sinctech.com	salesla@sinctech.com	salescan@sinctech.com
Product Specification Sheet		SY450		Dated: 05-02-10

SY450-SF1SNM

SY450-SF2SNM

Electrical Specifications

Frequency Range, MHz	746 to 896	806 to 960
Gain (nominal), dBd (dBi)	6.5 (8.6)	6.5 (8.6)
Input VSWR (max)	1.5:1	1.5:1
Polarization	vertical	vertical
Pattern	Directional	Directional
Horizontal beamwidth, degrees	80	80
Vertical beamwidth, degrees	60	60
Average Power Input (max), W	100	100
Front-to-back ratio (typ), dB	20	20

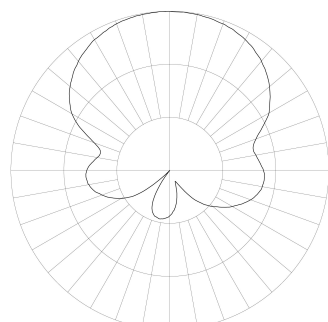
Mechanical Specifications

Connector	N (male)	N (male)
Length/ Height, in (mm)	22.5 (572)	22.5 (572)
Width, in (mm)	8.5 (216)	8.5 (216)
Depth, in (mm)	3 (75)	3 (75)
Base pipe diameter, in (mm)	0.8 (19)	0.8 (19)
Base pipe mounting length, in (mm)	3 (76)	3 (76)
Weight, lbs (kg)	2 (0.9)	2 (0.9)
Weight iced, lbs (kg)		6 (2.7)
Actual Shipping weight, lbs (kg)	3.5 (1.6)	3.5 (1.6)
Shipping dimensions, in (mm)	24x10x4 (610x254x102)	24x10x4 (610x254x102)
Survival wind velocity (1" ice), mph (km/h)	135 (217)	135 (217)
Rated wind velocity (1" ice), mph (km/h)	115 (185)	115 (185)
Mounting hardware	#115 clamp	#115 clamp

Environmental Specifications

Temperature range, °F (°C)	-40 to +140 (-40 to +60)
----------------------------	--------------------------

SINCLAIR TECHNOLOGIES



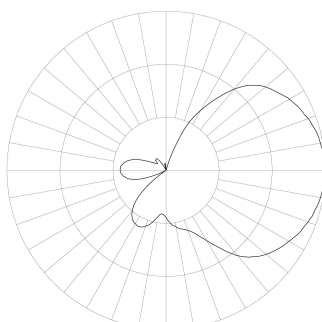
MEASURED RADIATION PATTERN
VERTICAL POLARIZATION

Azimuth

Relative Gain - 10 dB per Division

SY450-SF1SNM

SINCLAIR TECHNOLOGIES



MEASURED RADIATION PATTERN
VERTICAL POLARIZATION

Elevation

Relative Gain - 10 dB per Division

SY450-SF1SNM

Region	United States	Europe, Middle East and Africa	Caribbean and Latin America	Canada and rest of the world
Telephone	USA: 1 800 263 3275	International: +44 (0) 1223 42 03 03	International: +1 905 726 7676	Canada: 1 800 263 3275 International: +1 905 727 0165
E-mail	salesusa@sinctech.com	salesuk@sinctech.com	salesla@sinctech.com	salescan@sinctech.com
Product Specification Sheet		SY450		Dated: 05-02-10