

SV302

Corner reflector antenna, 9.5 dBd and 12 dBd, 406-512 MHz

- Offers reliable service in severe weather and ice conditions
- Broad band operation

The SV302 is a rugged corner reflector antenna which covers the entire 406-470 or 450-512 MHz range. Because of its broadband operation, it is an excellent antenna for multicoupling several systems or for use with widely spaced duplex frequencies. High power rated and/or heavier duty models are also available.

Model

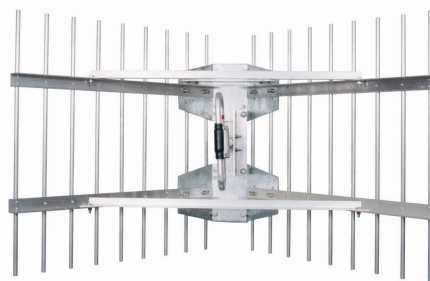
[SV302-HF1SNM](#)
[SV302-HF2SNM](#)
[SV3022-HF1SNM](#)
[SV3022-HF2SNM](#)

Description

9.5 dBd gain, N (male) connector, 406-470 MHz
9.5 dBd gain, N (male) connector, 450-512 MHz
12 dBd gain, N (male) connector, 406-470 MHz
12 dBd gain, N (male) connector, 450-512 MHz

Pattern

Directional
Directional
Directional
Directional



ROJONE
PTY. LTD.

Australian Representatives

ROJONE, PTY LTD.

Tel: 02 9829 1555
E: sales@rojone.com.au
www.rojone.com.au

Region	United States	Europe, Middle East and Africa	Caribbean and Latin America	Canada and rest of the world
Telephone	USA: 1 800 263 3275	International: +44 (0) 1223 42 03 03	International: +1 905 726 7676	Canada: 1 800 263 3275 International: +1 905 727 0165
E-mail	salesusa@sinctech.com	salesuk@sinctech.com	salesla@sinctech.com	salescan@sinctech.com
Product Specification Sheet		SV302		Dated: 05-02-10

SV302-HF1SNM

SV302-HF2SNM

SV3022-HF1SNM

SV3022-HF2SNM

Electrical Specifications

Frequency Range, MHz	406 to 470	450 to 512	406 to 470	450 to 512
Gain (nominal), dBd (dBi)	9.5 (11.6)	9.5 (11.6)	12 (14.1)	12 (14.1)
Input VSWR (max)	1.5:1	1.5:1	1.5:1	1.5:1
Polarization	vertical or horizontal	vertical or horizontal	vertical or horizontal	vertical or horizontal
Pattern	Directional	Directional	Directional	Directional
Horizontal beamwidth, degrees	45	38	38	38
Vertical beamwidth, degrees	60	60	30	30
Average Power Input (max), W	125	125		
Lightning protection	DC ground	DC ground	DC ground	DC ground
Bandwidth, MHz	64	62		
Front-to-back ratio (typ), dB	20	20	20	20

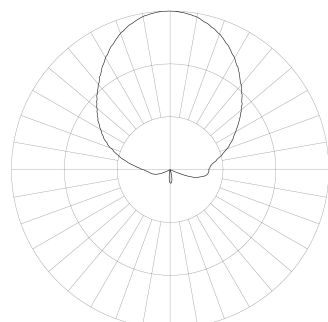
Mechanical Specifications

Connector	N (male)	N (male)	N (male)	N (male)
Length/ Height, in (mm)	30 (762)	30 (762)	30 (762)	30 (762)
Width, in (mm)	50 (1270)	50 (1270)	50 (1270)	50 (1270)
Depth, in (mm)	23 (584)	23 (584)	23 (584)	23 (584)
Weight, lbs (kg)	30 (13.6)	30 (13.6)	30 (13.6)	30 (13.6)
Actual Shipping weight, lbs (kg)	35 (15.9)	35 (15.9)	50 (22.7)	50 (22.7)
Shipping dimensions, in (mm)	32x10x31in ()	32x10x31in ()	47x12x36in ()	47x12x36in ()

Environmental Specifications

Rated wind velocity (no ice), mph (km/h)	125 (201)	125 (201)	125 (201)	125 (201)
Rated wind velocity (1/2" radial ice), mph (km/h)	85 (137)	85 (137)	85 (137)	85 (137)
Lateral thrust (100mph), lbs (N)	202 (898.5)	202 (898.5)	202 (898.5)	202 (898.5)

SINCLAIR TECHNOLOGIES

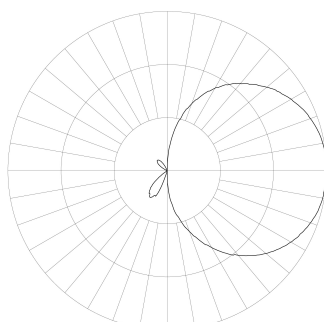


MEASURED RADIATION PATTERN
VERTICAL POLARIZATION

Azimuth
Relative Gain - 10 dB per Division

SV302-HF1SNM

SINCLAIR TECHNOLOGIES

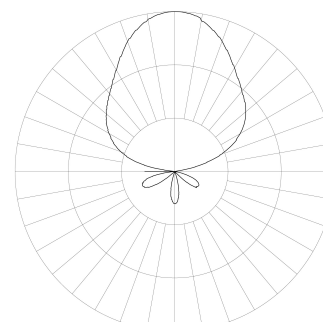


MEASURED RADIATION PATTERN
VERTICAL POLARIZATION

Elevation
Relative Gain - 10 dB per Division

SV302-HF1SNM

SINCLAIR TECHNOLOGIES



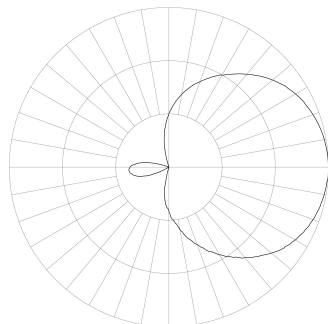
MEASURED RADIATION PATTERN
VERTICAL POLARIZATION

Azimuth
Relative Gain - 10 dB per Division

SV302-HF2SNM

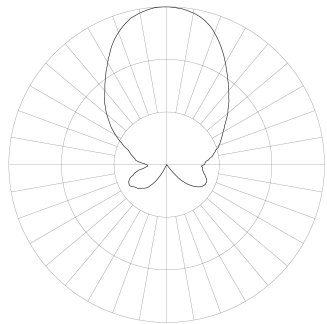
Region	United States	Europe, Middle East and Africa	Caribbean and Latin America	Canada and rest of the world
Telephone	USA: 1 800 263 3275	International: +44 (0) 1223 42 03 03	International: +1 905 726 7676	Canada: 1 800 263 3275 International: +1 905 727 0165
E-mail	salesusa@sinctech.com	salesuk@sinctech.com	salesla@sinctech.com	salescan@sinctech.com
Product Specification Sheet		SV302		Dated: 05-02-10

SINCLAIR TECHNOLOGIES



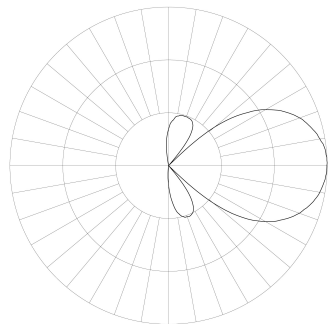
MEASURED RADIATION PATTERN
VERTICAL POLARIZATION
Elevation
Relative Gain - 10 dB per Division
SV302-HF2SNM

SINCLAIR TECHNOLOGIES



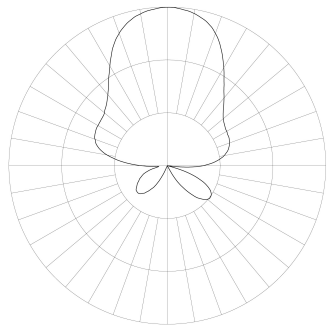
MEASURED RADIATION PATTERN
VERTICAL POLARIZATION
Azimuth
Relative Gain - 10 dB per Division
SV3022-HF1SNM

SINCLAIR TECHNOLOGIES



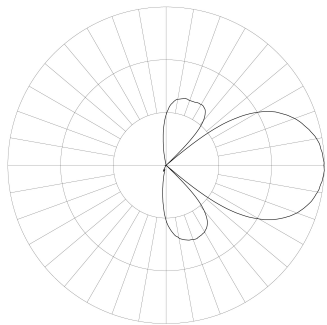
MEASURED RADIATION PATTERN
VERTICAL POLARIZATION
Elevation
Relative Gain - 10 dB per Division
SV3022-HF1SNM

SINCLAIR TECHNOLOGIES



MEASURED RADIATION PATTERN
VERTICAL POLARIZATION
Azimuth
Relative Gain - 10 dB per Division
SV3022-HF2SNM

SINCLAIR TECHNOLOGIES



MEASURED RADIATION PATTERN
VERTICAL POLARIZATION
Elevation
Relative Gain - 10 dB per Division
SV3022-HF2SNM

www.sinctech.com

Region	United States	Europe, Middle East and Africa	Caribbean and Latin America	Canada and rest of the world
Telephone	USA: 1 800 263 3275	International: +44 (0) 1223 42 03 03	International: +1 905 726 7676	Canada: 1 800 263 3275 International: +1 905 727 0165
E-mail	salesusa@sinctech.com	salesuk@sinctech.com	salesla@sinctech.com	salescan@sinctech.com
Product Specification Sheet		SV302		Dated: 05-02-10