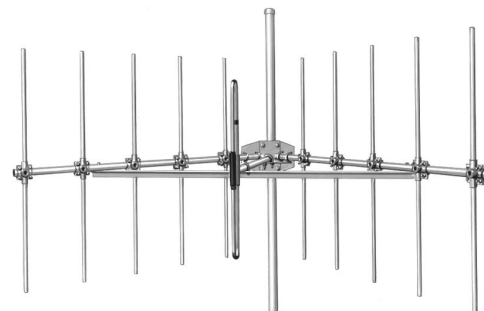


SV227

Corner reflector directive antenna, 7 dBd gain, 132-174 MHz

- Folded dipole feed permits operation in severe conditions
- High power and heavy duty models available
- VSWR will not exceed 2.0:1 even with 0.5 in. of radial ice

Excellent broadband high gain corner reflector for use in the 138-174 MHz frequency range. Its folded dipole feed permits operation under severe weather and ice conditions without significant change in pattern or VSWR. Even with 0.5 in of radial ice, the antenna VSWR will not exceed 2.0:1. Higher power and/or heavy-duty models are available.



Model

[SV227-SF1SNM](#)
[SV227-SF2SNM](#)

Description

7 dBd gain, N (male) connector, 130-150 MHz
7 dBd gain, N (male) connector, 148-174 MHz

Pattern

Directional
Directional



Australian Representatives
ROJONE, PTY LTD.
Tel: 02 9829 1555
E: sales@rojone.com.au
www.rojone.com.au

Region	United States	Europe, Middle East and Africa	Caribbean and Latin America	Canada and rest of the world
Telephone	USA: 1 800 263 3275	International: +44 (0) 1223 42 03 03	International: +1 905 726 7676	Canada: 1 800 263 3275 International: +1 905 727 0165
E-mail	salesusa@sinctech.com	salesuk@sinctech.com	salesla@sinctech.com	salescan@sinctech.com
Product Specification Sheet		SV227		Dated: 05-02-10

SV227-SF1SNM

SV227-SF2SNM

Electrical Specifications

Frequency Range, MHz	130 to 150	148 to 174
Gain (nominal), dBd (dBi)	7 (9.1)	7 (9.1)
Input VSWR (max)	1.5:1	1.5:1
Polarization	vertical or horizontal	vertical or horizontal
Pattern	Directional	Directional
Horizontal beamwidth, degrees	67	67
Vertical beamwidth, degrees	75	75
Average Power Input (max), W	250	250
Lightning protection	DC ground	DC ground
Bandwidth, MHz	20	26
Front-to-back ratio (typ), dB	30	30

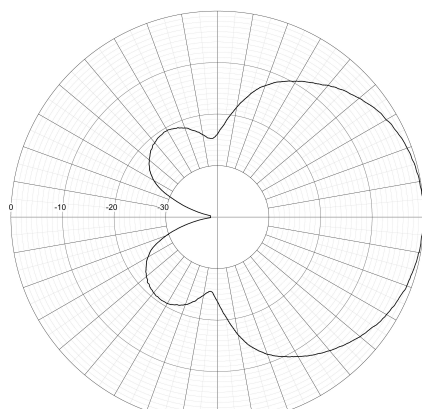
Mechanical Specifications

Connector	N (male)	N (male)
Length/ Height, in (mm)	55.3 (1405)	48 (1219)
Width, in (mm)	85 (2159)	69.3 (1760)
Depth, in (mm)	60 (1524)	49 (1245)
Radiating element material	aluminum	aluminum
Weight, lbs (kg)	14 (6.4)	28.3 (12.8)
Weight iced, lbs (kg)	119 (54)	101 (45.9)
Actual Shipping weight, lbs (kg)	75 (34.1)	
Shipping dimensions, in (mm)	120x7x17 (3048x178x432)	78x36x54 (1981x914x1372)
Mounting hardware	#4 clamp	#4 clamp

Environmental Specifications

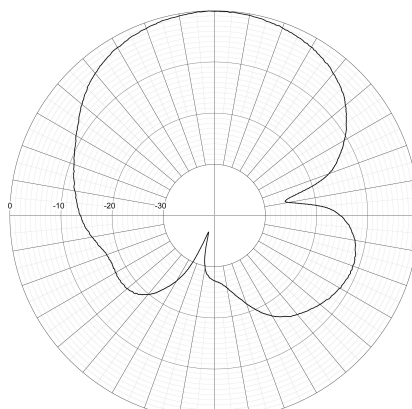
Temperature range, °F (°C)	-40 to +140 (-40 to +60)	-40 to +140 (-40 to +60)
Wind Loading Area (Flat Plate Equivalent), ft² (m²)	9.3 (0.86)	5.3 (0.49)
Wind Loading Area (ice), ft² (m²)	17 (1.58)	9.2 (0.85)
Rated wind velocity (no ice), mph (km/h)	130 (209)	135 (217)
Rated wind velocity (1/2" radial ice), mph (km/h)	90 (145)	95 (153)
Lateral thrust (100mph), lbs (N)	240 (1067.5)	202 (898.5)

SINCLAIR TECHNOLOGIES



SV227-SF1SNM

SINCLAIR TECHNOLOGIES



SV227-SF1SNM

Region	United States	Europe, Middle East and Africa	Caribbean and Latin America	Canada and rest of the world
Telephone	USA: 1 800 263 3275	International: +44 (0) 1223 42 03 03	International: +1 905 726 7676	Canada: 1 800 263 3275 International: +1 905 727 0165
E-mail	salesusa@sinctech.com	salesuk@sinctech.com	salesla@sinctech.com	salescan@sinctech.com
Product Specification Sheet		SV227		Dated: 05-02-10