

[< Home](#)
[< Family](#)

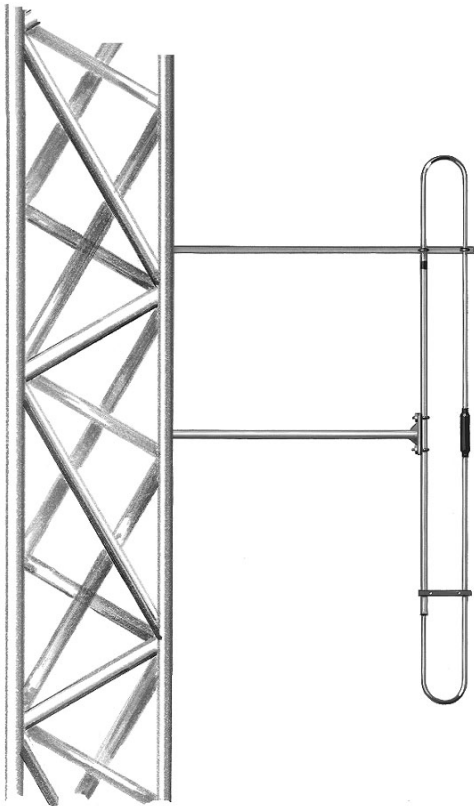
SD110

Exposed dipole directive antenna, 2.5 dBd gain, 30-76 MHz

- Covers 30-76 MHz in 0.5 MHz Increments, this antenna has a 10% BW at 1.5:1 VSWR.
- 2.5 dBd gain, offset pattern (1/8 wave)
- 100 mph wind velocity
- 300 Watts power handling

The SD110 is a single broadband dipole for side mounting on a supporting structure. The SD110 series is supplied with a special welded boom and anti-torque support. Due to the many mounting possibilities, mounting hardware is not supplied with these antennas. Engineering assistance will be provided in the selection of the proper hardware.

Model	Description	Pattern
SD110-SFXPASNM	2.5 dBd gain, N (male) connector, 30-76 MHz	Offset



www.sinctech.com



ROJONE
PTY. LTD.

Australian Representatives
ROJONE, PTY LTD.
Tel: 02 9829 1555
E: sales@rojone.com.au
www.rojone.com.au

Region	United States	Europe, Middle East and Africa	Caribbean and Latin America	Canada and rest of the world
Telephone	USA: 1 800 263 3275	International: +44 (0) 1223 42 03 03	International: +1 905 726 7676	Canada: 1 800 263 3275 International: +1 905 727 0165
E-mail	salesusa@sinctech.com	salesuk@sinctech.com	salesla@sinctech.com	salescan@sinctech.com
Product Specification Sheet		SD110		Dated: 05-02-10

SD110-SFXPASNM

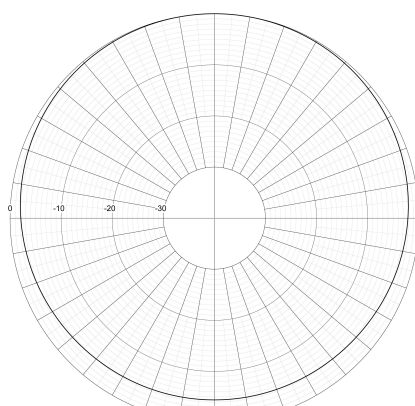
Electrical Specifications

Frequency Range, MHz	30 to 76
Gain (nominal), dBd (dBi)	2.5 (4.6)
Input VSWR (max)	1.5:1
Polarization	vertical
Pattern	Offset
Vertical beamwidth, degrees	68
Average Power Input (max), W	300
Lightning protection	DC ground

Mechanical Specifications

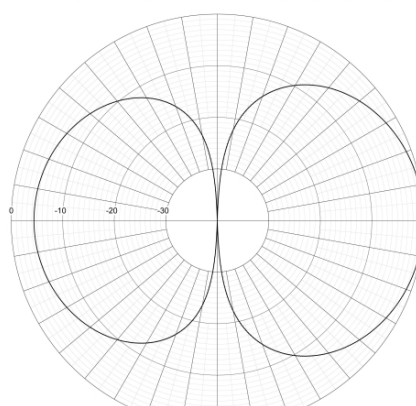
Connector	N (male)
Length/ Height, in (mm)	190 (4826)
Weight, lbs (kg)	25 (11.4)
Actual Shipping weight, lbs (kg)	45 (20.4)
Shipping dimensions, in (mm)	195x4x55 (4953x102x1397)

SINCLAIR TECHNOLOGIES



SD110-SFXPASNM

SINCLAIR TECHNOLOGIES



SD110-SFXPASNM

Region	United States	Europe, Middle East and Africa	Caribbean and Latin America	Canada and rest of the world
Telephone	USA: 1 800 263 3275	International: +44 (0) 1223 42 03 03	International: +1 905 726 7676	Canada: 1 800 263 3275 International: +1 905 727 0165
E-mail	salesusa@sinctech.com	salesuk@sinctech.com	salesla@sinctech.com	salescan@sinctech.com
Product Specification Sheet		SD110		Dated: 05-02-10