

800-2500 MHz



800-2500 MHz

Directional

4 Port Directional Couplers



(Replacement of AMA – 1251)

FEATURES

- High Power 200 Watts Average
- Wide Band 800-2500 MHz
- Low Intermodulation Design

The AMA-1255 is our updated Coupler range and was specifically designed for Cellular Telecommunications and now also includes the New 3rd Generation frequency & WLAN bandwidth requirements. These couplers are designed for in-building network distribution applications.

Note: 3dB Couplers are also ideal for 200 Watt Splitter applications.

Note: 30dB couplers are non-directional with a flatness spec of +/- 1dB.

Specifications

Last Updated 12/06

Part Number

AMA-1255-XX-1W

XX = Coupling value required

Coupling Value	3, 4, 8, 6, 7, 8, 10, 12, 13, 15, 17, 20 & 30dB	Coupling	Ideal Thru Loss	Typical Thru Loss
Frequency Range	800 to 2500 MHz	3dB	3.02dB	3.17dB
Directivity	> 20dB	4.8dB	1.75dB	1.90dB
Insertion Loss	< 0.25dB 0.15dB Typical	6dB	1.26dB	1.41dB
Return Loss	>-18 dB All Ports, typ-20db	7dB	0.97dB	1.12dB
Isolation	> 20dB 40dB Typical	8dB	0.75dB	0.90dB
Coupling Flatness	+/- 0.5dB Typical	9dB	0.58dB	0.73dB
Impedance	50 Ohms	10dB	0.46dB	0.61dB
Connector Type	N Female (Low IM Plated)	12dB	0.28dB	0.43dB
Package Size	86 x 57 x 19mm	13dB	0.22dB	0.37dB
Weight	300g Max	15dB	0.14dB	0.29dB
		18dB	0.07dB	0.22dB
		20dB	0.04dB	0.19dB
		30dB	0.004dB	0.15dB

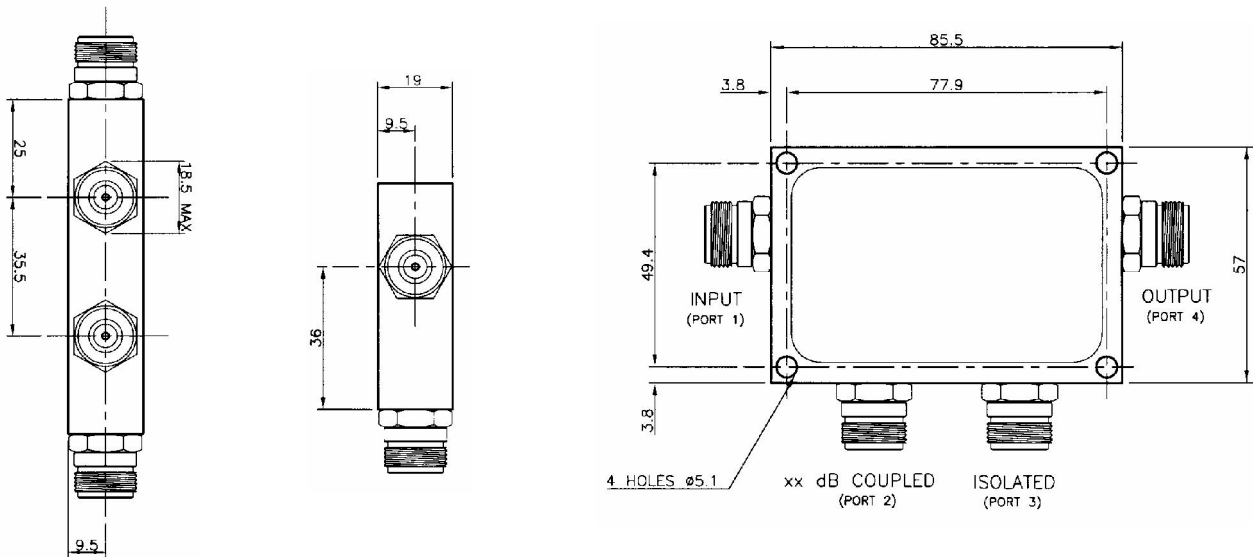
ROJONE PTY. LIMITED - AUSTRALIA

sales@rojone.com.au

www.rojone.com.au



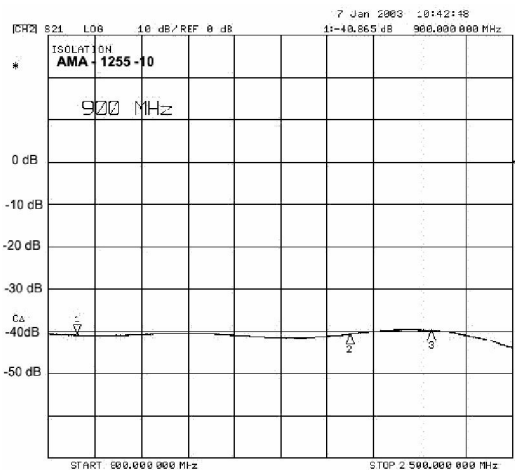
Mechanical Outline



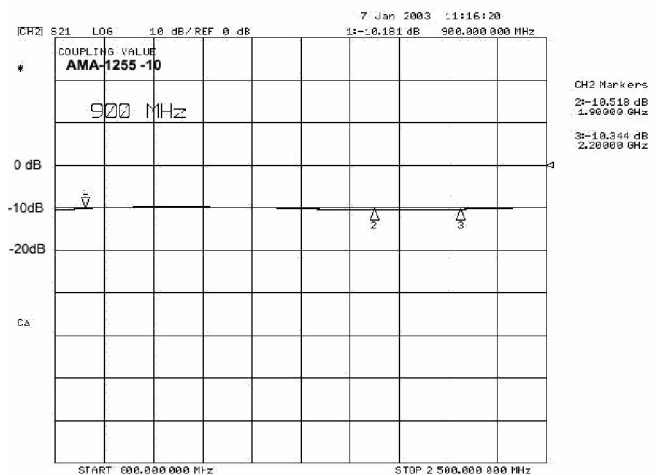
TYPICAL PERFORMANCE

More detailed performance information is available on our website - www.rojone.com.au

Isolation Plot



Coupling Value Plot



Note: Couplers will pass DC between the Input and Output ports or between Coupled and Isolated Ports.
 Note: 30dB couplers are non-directional with a flatness spec of +/- 1dB.