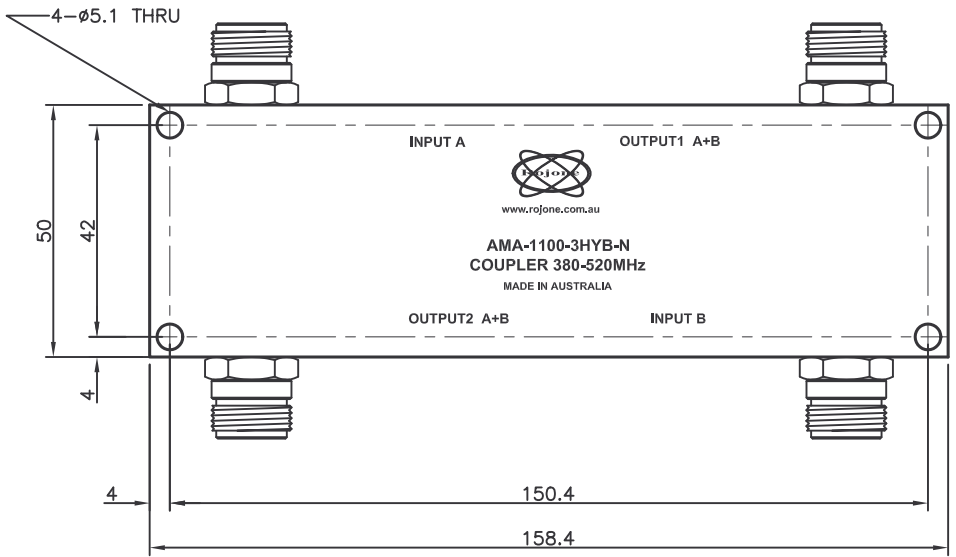


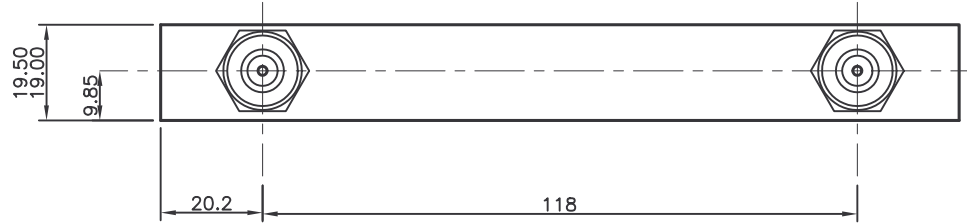
**SPECIFICATIONS**

Part Number: AMA-1100-3HYB-N  
 Coupling Value: 3dB  
 Frequency Range: 350-520MHz  
 Power Handling: 100W CW@25°C  
 Return Loss: 20dB typ.  
 Isolation: 20dB typ.  
 Thru Loss: <3.5dB; 3.2dB typ.  
 Op. Temp: 0 to 85°C  
 Connector: N-F (low IM plated)  
 Weight: 400 grams aluminium housing  
 900 grams brass housing  
 Size: 159x50x20 mm + Conn.



**NOTES:**

- FOR ASSEMBLY DRAWING SEE 001001100004 'H' PATTERN SERIES COUPLER ASSEMBLY DRAWING
- ROJONE PART No. DESIGNATION AMA-1100-3HYB-N  
 CONN. TYPE →  
 COUPLING VALUE →
- COUPLERS ARE DESIGNED FOR LOW INTERMODULATION OPERATION
- ALL CONNECTORS ARE FEMALE N-TYPE WITH 12 TO 15 inlbs (1.30Nm - 1.70Nm) MATING TORQUE.
- DC PATH ONLY EXISTS BETWEEN ADJACENT PORTS,  
 ie: A → A+B & A+B → B



ROJONE PTY LTD ACN 002691241 61 AERO RD INGLEBURN 2565 SYDNEY, AUSTRALIA Ph: (612) 9829 1555 Fax: (612) 9605 8812 Web: www.rojone.com.au E-mail: sales@rojone.com.au		TITLE 'H' PATTERN SERIES UHF COUPLER 380-520MHz (N-TYPE)	
MATERIAL ALUMINIUM &/OR BRASS HOUSING & COVER		DRWG No: 001001100022	
FINISH POLYURETHANE AS2700 N42 STORM GREY		SCALE 1:1 SHEET 1 OF 1	
TOLERANCE: LINEAR ±0.1 ANGULAR ±1° REMOVE ALL BURRS AND SHARP EDGES		FILENAME 001001100022ISSA.DWG	

ALL SPECIFICATIONS SUBJECT TO CHANGE UNLESS OTHERWISE STATED ALL DIMENSIONS ARE IN MILLIMETRES (mm) TOLERANCE: LINEAR ±0.1 ANGULAR ±1° REMOVE ALL BURRS AND SHARP EDGES

REVISION	DATE	CHECKED
A	26-08-2004	H. JIA

A3