

8

7

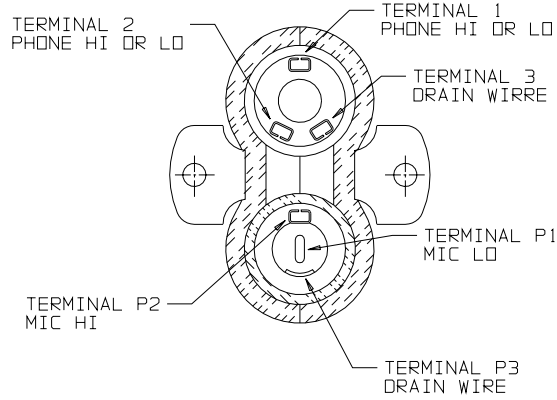
6

5

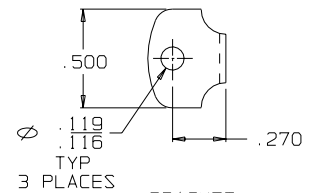
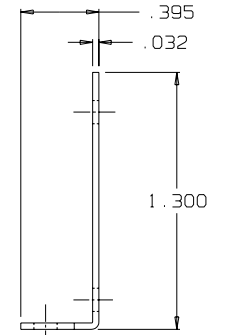
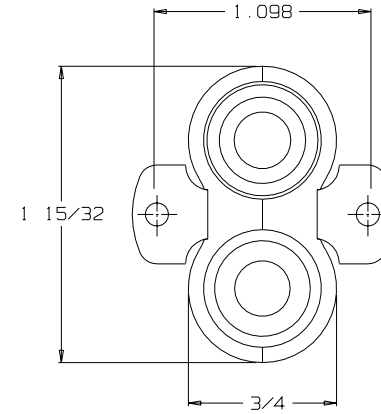
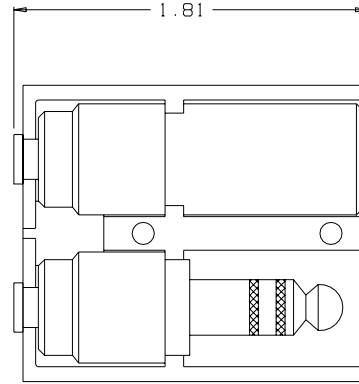
4

3

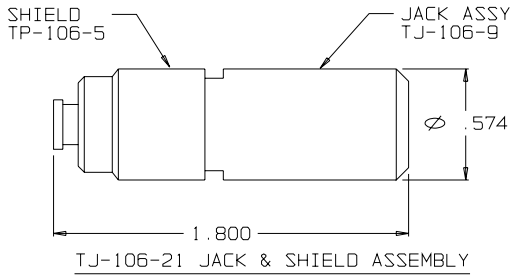
C TJ-106PM



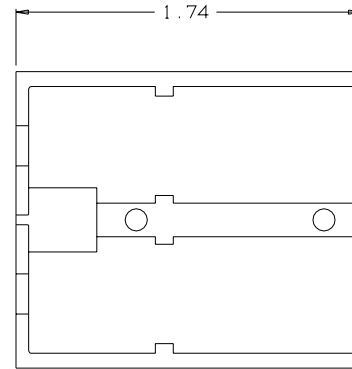
SECTION A-A



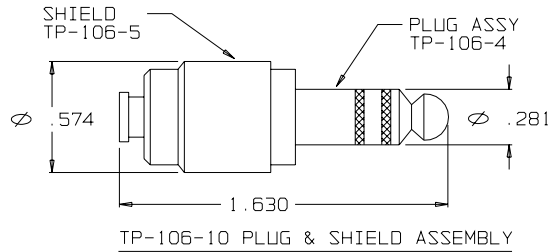
BRACKET TJ-106PM-1 (2 REQ'D)



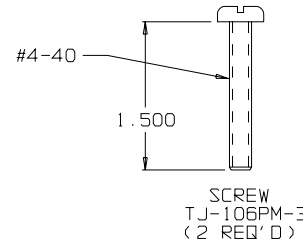
TJ-106-21 JACK & SHIELD ASSEMBLY



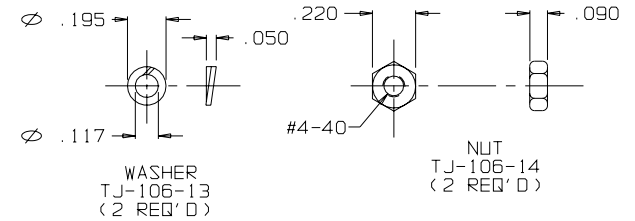
SHELL HALF TJ-106PM-1 (2 REQ'D)



TP-106-10 PLUG & SHIELD ASSEMBLY

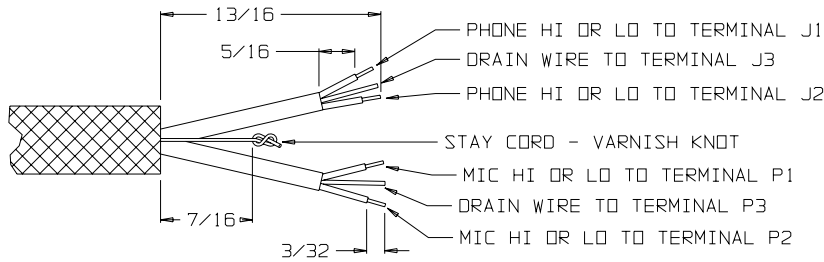


SCREW TJ-106PM-3 (2 REQ'D)



WASHER TJ-106-13 (2 REQ'D)

NUT TJ-106-14 (2 REQ'D)



THIS DOCUMENT CONTAINS PROPRIETARY INFORMATION OF NEXUS, INCORPORATED AND SUCH INFORMATION MAY NOT BE DISCLOSED TO OTHERS FOR ANY PURPOSE OR USED FOR ANY PURPOSE WITHOUT THE WRITTEN CONSENT OF NEXUS.

DWN BY EWT	DATE 12/9/05	MATERIAL SEE FIELD OF DRAWING
CHECKED BY	DATE	FINISH N/A
APPR BY	DATE	WEIGHT
UNLESS OTHERWISE SPECIFIED DIMENSIONS ARE IN INCHES TOLERANCES ON		SCALE 2:1
.XX	.XXX	TITLE TELEPHONE JACK PANEL MOUNT 6 CONDUCTOR
± .02	± .003	ANGLES ± 5°
LET.	REVISION	DO NOT SCALE DWG.
		SHEET 1 OF 1
		SIZE C
		DWG. NO. TJ-106PM

NEXUS STAMFORD, CONN

SIZE C DWG. NO. TJ-106PM