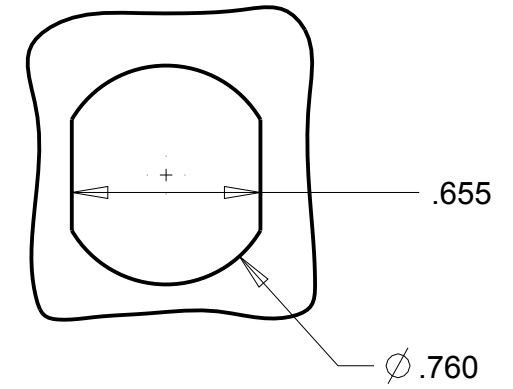
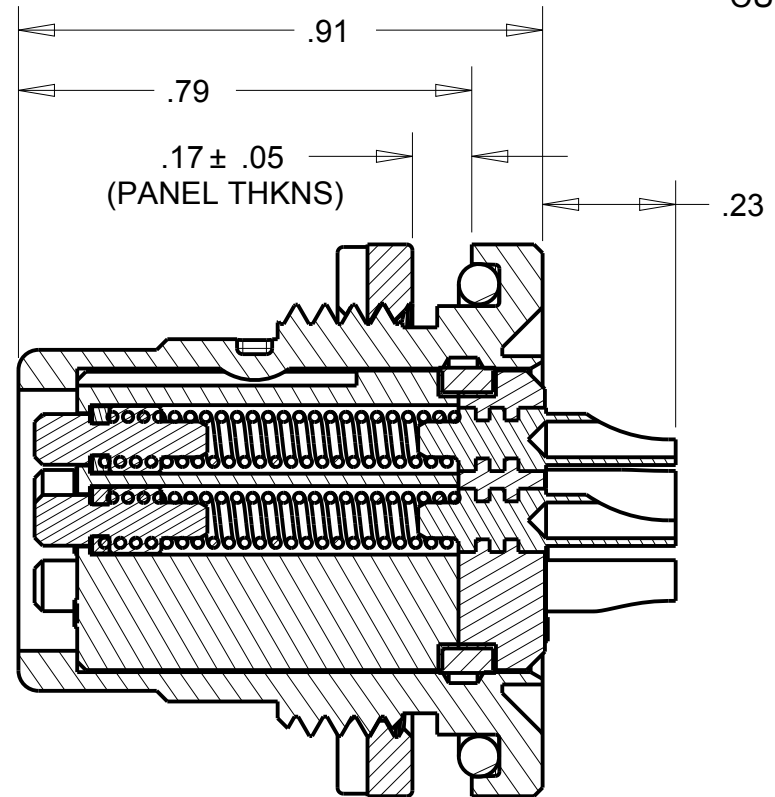


**PROPRIETY - NEXUS**  
**ORDERING PART NUMBER: AJ-146**

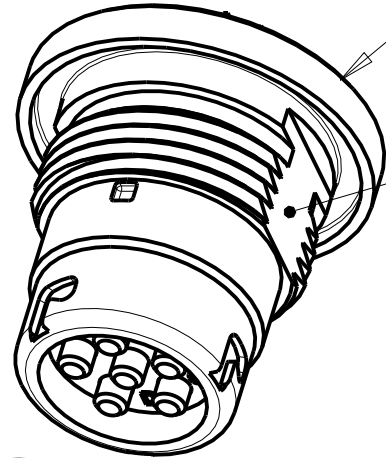
**B** AJ-146-CP



RECOMMENDED  
 PANEL  
 CUTOUT

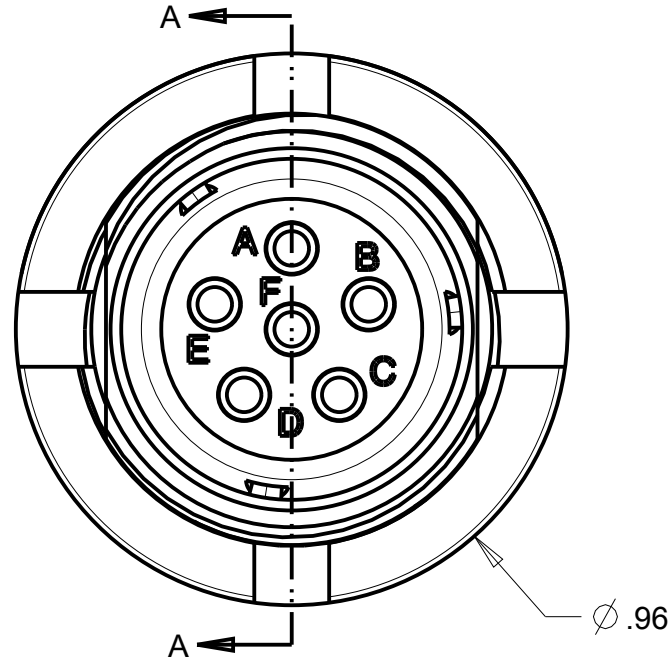
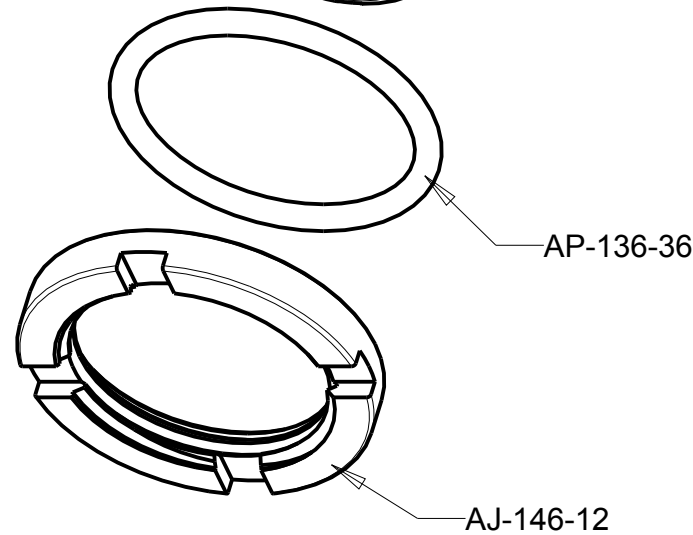


SECTION A-A  
 SCALE 3.000



SEE NOTE 3

AJ-146-10  
 6 CONDUCTOR  
 PM PLUG SUB ASSY.



NOTES:  
 1. CONNECTOR IS QUALIFIED TO MIL-DTL-55116.  
 2. MILITARY PART IDENTIFYING NO.: M55116/10-0

THIS DOCUMENT CONTAINS PROPRIETARY INFORMATION OF NEXUS, INCORPORATED AND SUCH INFORMATION MAY NOT BE DISCLOSED TO OTHERS FOR ANY PURPOSE OR USED FOR ANY PURPOSE WITHOUT THE WRITTEN CONSENT OF NEXUS.

**Australian Representatives**  
**ROJONE, PTY LTD.**  
 Tel: 02 9829 1555  
 E: sales@rojone.com.au  
 www.rojone.com.au

F	ADD .17± .05 (PANEL THKNS)	174	5/9 2013	HR	DWN.BY	GPH	DATE	05-Jun-09	MATERIAL		
E	ADD PANEL CUTOUT		6/19 2012	HR	CHECKED BY		DATE		FINISH		
D	CHG AJ-146-13 TO AP-136-36	115	11/11 2011	HR	APPR.BY		DATE		WEIGHT — SCALE = 4.00 :1		
C	ADD DIMS	102	3/30 2011	HR	UNLESS OTHERWISE SPECIFIED: DIMENSIONS ARE IN INCHES &/OR (mm) TOLERANCES: DECIMAL: .XX[X.X] .XXX[X.XX] ± .01[0.3] ± .003[0.08] FRACTION: X/X ± 1/64 ANGLES: .X ± .5°				TITLE <b>JACK -6 PIN SOLDER CUP, PM</b>		NEXUS STAMFORD, CONN
B	ADD NOTES 1 THRU 3	035	12/15 2009	GPH							
A	NEW RELEASE	032	11/23 2009	GPH	DO NOT SCALE DWG.				SHEET 1 OF 1	<b>B</b> AJ-146-CP	
LET.	REVISION	CN #	DATE	CHK.							