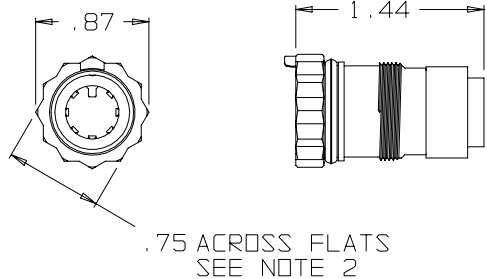
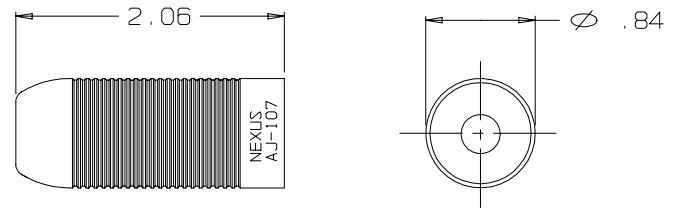


B AJ-107

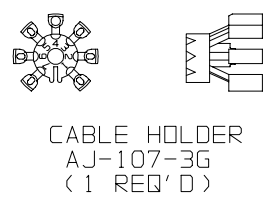
NOTES:
 1) THIS PART MATES WITH AP-107 SEVEN CONDUCTOR WATERPROOF AUDIO PLUG.
 2) CONFIGURATION IS FOR 3/4"-12 PT SOCKET WRENCH



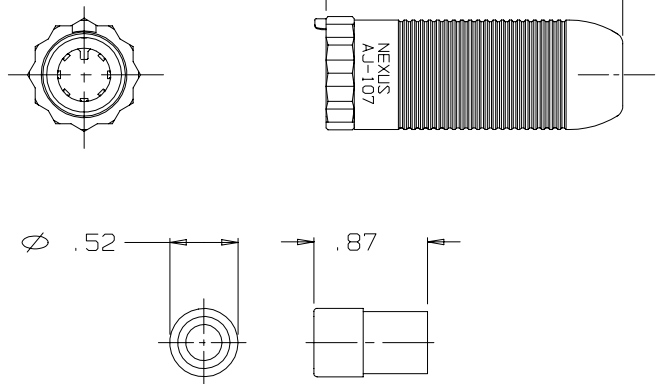
AJ-107-29
 JACK BODY ASSEMBLY
 (1 REQ'D)



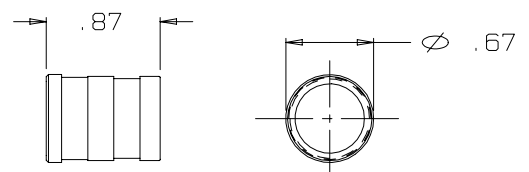
AJ-107-15
 SHELL
 (1 REQ'D)



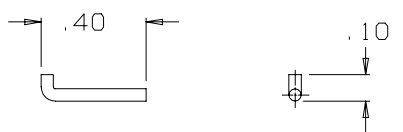
CABLE HOLDER
 AJ-107-3G
 (1 REQ'D)



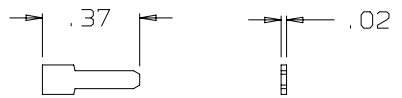
AP-107-27
 CABLE SEAL ASSEMBLY
 (1 REQ'D)



AP-107-4
 SLEEVE
 (1 REQ'D)



AP-107-9
 RETAINER PIN
 SCALE 2:1
 (1 REQ'D)



AP-107-25
 SHIM
 SCALE 2:1
 (1 REQ'D)

THIS DOCUMENT CONTAINS PROPRIETARY INFORMATION OF NEXUS, INCORPORATED AND SUCH INFORMATION MAY NOT BE DISCLOSED TO OTHERS FOR ANY PURPOSE OR USED FOR ANY PURPOSE WITHOUT THE WRITTEN CONSENT OF NEXUS.

Australian Representatives
ROJONE, PTY LTD.
 Tel: 02 9829 1555
 E: sales@rojone.com.au
 www.rojone.com.au

DWN. BY	EWT	DATE	2/11/04	MATERIAL	SEE FIELD OF DRAWING	
CHECKED BY		DATE		FINISH	N/A	
APPR. BY		DATE		WEIGHT	—	SCALE 1:1
UNLESS OTHERWISE SPECIFIED DIMENSIONS ARE IN INCHES TOLERANCES ON				TITLE		
.XX .XXX ANGLES						
— ±.003 ±.5°				SEVEN CONDUCTOR WATERPROOF AUDIO JACK		
DO NOT SCALE DWG.				SHEET 1 OF 1		NEXUS STAMFORD, CONN SIZE B DWG. NO. AJ-107

LET.	REVISION	CN #	DATE	CHK.