

[< Home](#)
[< Family](#)

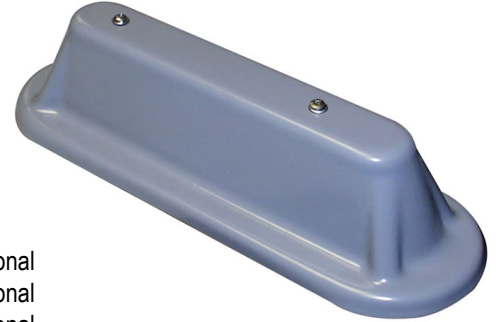
ST321R

Mobile omni, 0 dBd gain, low profile, radome, 380-512 MHz

- For use in both fixed and mobile installations
- Renown for its years of reliable service in very harsh environmental conditions
- Available with white or grey radome
- Available with N (female) or BNC (female) connector

Sinclair's radome-enclosed ST321R series of antennas is designed for a variety of mobile applications: railroad locomotives, taxis, police cars, emergency vehicles, buses and trucks.

Fire retardant radome is available.



Model	Description	Pattern
ST321R-SF1SBF(CWH)	0 dBd gain, BNC-female connector, 406-420 MHz	Omni-directional
ST321R-SF1SNF(CWH)	0 dBd gain, N-female connector, 406-420 MHz	Omni-directional
ST321R-SF2SNF(CWH)	0 dBd gain, N-female connector, 420-440 MHz	Omni-directional
ST321R-SF3SNF(CGR)	0 dBd gain, N-female connector, 450-470 MHz	Omni-directional
ST321R-SF4SNF(CGR)	0 dBd gain, N-female connector, 470-490 MHz	Omni-directional
ST321R-SF5SNF(CWH)	0 dBd gain, N-female connector, 490-512 MHz	Omni-directional
ST321R-SF6SBF(CGR)	0 dBd gain, BNC-female connector, 380-400 MHz	Omni-directional
ST321R-SF6SNF(CGR)	0 dBd, N (female) connector, 380-400 MHz	Omni-directional

www.sinctech.com



Australian Representatives
ROJONE, PTY LTD.
Tel: 02 9829 1555
E: sales@rojone.com.au
www.rojone.com.au

Gray model shown.

Region	United States	Europe, Middle East and Africa	Caribbean and Latin America	Canada and rest of the world
Telephone	USA: 1 800 263 3275	International: +44 (0) 1223 42 03 03	International: +1 905 726 7676	Canada: 1 800 263 3275 International: +1 905 727 0165
E-mail	salesusa@sinctech.com	salesuk@sinctech.com	salesla@sinctech.com	salescan@sinctech.com
Product Specification Sheet		ST321R		Dated: 05-02-10

[ST321R-SF1SBF\(CWH\)](#)

[ST321R-SF1SNF\(CWH\)](#)

[ST321R-SF2SNF\(CWH\)](#)

[ST321R-SF3SNF\(CGR\)](#)

Electrical Specifications

Frequency Range, MHz	406 to 420	406 to 420	420 to 440	450 to 470
Gain (nominal), dBd (dBi)	unity (2.1)	unity (2.1)	unity (2.1)	unity (2.1)
Input VSWR (max)	1.5:1	1.5:1	1.5:1	1.5:1
Polarization	vertical	vertical	vertical	vertical
Impedance, Ω	50	50	50	50
Pattern	Omni-directional	Omni-directional	Omni-directional	Omni-directional
Average Power Input (max), W	30	30	30	30
Lightning protection	DC ground	DC ground	DC ground	DC ground
Bandwidth, MHz	14	14	20	20

Mechanical Specifications

Connector	BNC (female)	N (female)	N (female)	N (female)
Length/ Height, in (mm)	3 (76)	3 (76)	3 (76)	3 (76)
Width, in (mm)	3.8 (97)	3.8 (97)	3.8 (97)	3.8 (97)
Radome material	ABS (white)	ABS (white)	ABS (white)	ABS (gray)
Weight, lbs (kg)	2 (0.9)	2 (0.9)	2 (0.9)	2 (0.9)
Actual Shipping weight, lbs (kg)	5 (2.3)	5 (2.3)	5 (2.3)	5 (2.3)
Shipping dimensions, in (mm)	13x8x5 (330x203x127)	13x8x5 (330x203x127)	13x8x5 (330x203x127)	13x8x5 (330x203x127)
Length, in (mm)	11.8 (300)	11.8 (300)	11.8 (300)	11.8 (300)
Ground Plane, in (mm)	30x30x0.1 (762x762x3)	30x30x0.1 (762x762x3)	30x30x0.1 (762x762x3)	30x30x0.1 (762x762x3)
Mounting hardware	Supplied	Supplied	Supplied	Supplied

Environmental Specifications

Temperature range, °F (°C)	-22 to +140 (-30 to +60)	-22 to +140 (-30 to +60)	-22 to +140 (-30 to +60)	-22 to +140 (-30 to +60)
----------------------------	--------------------------	--------------------------	--------------------------	--------------------------

Region	United States	Europe, Middle East and Africa	Caribbean and Latin America	Canada and rest of the world
Telephone	USA: 1 800 263 3275	International: +44 (0) 1223 42 03 03	International: +1 905 726 7676	Canada: 1 800 263 3275 International: +1 905 727 0165
E-mail	salesusa@sinctech.com	salesuk@sinctech.com	salesla@sinctech.com	salescan@sinctech.com

[ST321R-SF4SNF\(CGR\)](#)

[ST321R-SF5SNF\(CWH\)](#)

[ST321R-SF6SBF\(CGR\)](#)

[ST321R-SF6SNF\(CGR\)](#)

Electrical Specifications

Frequency Range, MHz	470 to 490	490 to 512	380 to 400	380 to 400
Gain (nominal), dBd (dBi)	unity (2.1)	unity (2.1)	unity (2.1)	unity (2.1)
Input VSWR (max)	1.5:1	1.5:1	2:1	2:1
Polarization	vertical	vertical	vertical	vertical
Impedance, Ω	50	50	50	50
Pattern	Omni-directional	Omni-directional	Omni-directional	Omni-directional
Average Power Input (max), W	30	30	30	30
Lightning protection	DC ground	DC ground	DC ground	DC ground
Bandwidth, MHz	20	22	20	20

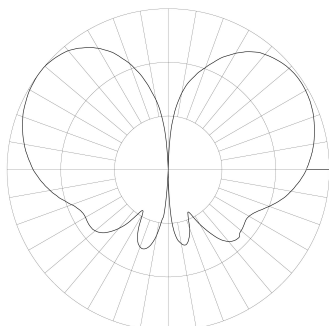
Mechanical Specifications

Connector	N (female)	N (female)	BNC (female)	N (female)
Length/ Height, in (mm)	3 (76)	3 (76)	3 (76)	3 (76)
Width, in (mm)	3.8 (97)	3.8 (97)	3.8 (97)	3.8 (97)
Radome material	ABS (gray)	ABS (white)	ABS (gray)	ABS (gray)
Weight, lbs (kg)	2 (0.9)	2 (0.9)	2 (0.9)	2 (0.9)
Actual Shipping weight, lbs (kg)	5 (2.3)	5 (2.3)	5 (2.3)	5 (2.3)
Shipping dimensions, in (mm)	13x8x5 (330x203x127)	13x8x5 (330x203x127)	13x8x5 (330x203x127)	13x8x5 (330x203x127)
Length, in (mm)	11.8 (300)	11.8 (300)	11.8 (300)	11.8 (300)
Ground Plane, in (mm)	30x30x0.1 (762x762x3)	30x30x0.1 (762x762x3)	30x30x0.1 (762x762x3)	30x30x0.1 (762x762x3)
Mounting hardware	Supplied	Supplied	Supplied	Supplied

Environmental Specifications

Temperature range, °F (°C)	-22 to +140 (-30 to +60)	-22 to +140 (-30 to +60)	-22 to +140 (-30 to +60)	-22 to +140 (-30 to +60)
----------------------------	--------------------------	--------------------------	--------------------------	--------------------------

SINCLAIR TECHNOLOGIES



MEASURED RADIATION PATTERN
VERTICAL POLARIZATION

Elevation
Relative Gain - 10 dB per Division

ST321R-SF1SBF(CWH)

Region	United States	Europe, Middle East and Africa	Caribbean and Latin America	Canada and rest of the world
Telephone	USA: 1 800 263 3275	International: +44 (0) 1223 42 03 03	International: +1 905 726 7676	Canada: 1 800 263 3275 International: +1 905 727 0165
E-mail	salesusa@sinctech.com	salesuk@sinctech.com	salesla@sinctech.com	salescan@sinctech.com

Product Specification Sheet

ST321R

Dated: 05-02-10