

[< Home](#)
[< Family](#)

SM600

High performance, low profile, universal transport antenna, 746-2500 MHz

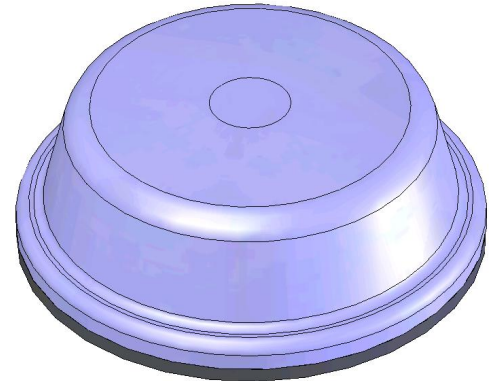
- Covers full frequency band from 746 MHz to 2500 MHz
- Maximum 2 inches height
- Easy installation- One 3/4" hole mount
- Excellent design for waterproofing and vibration adaptive to curve surface

Area coverage. Ideal for ceiling mounting or vehicle roof-top mounting. The small size and low profile allow it to blend easily with any environment. Covers all the bands for 2G, 2.5G and 3G cellular, as well as ISM, WLAN, in-building wireless system, and broadband internet access.

The SM600 comes standard with white radome. Black is also available.

Application Notes

- Grounding area must be at least 14 inches in diameter. Only the mounting washer needs conductive contact with the ground plane
- For indoor applications an additional ground plate that is at least 14 inches in diameter must be utilized.



Model	Description	Pattern
SM600-SWBSNF	High performance, low profile, universal transport antenna, 746-2500 MHz	Omni-directional

www.sinctech.com



Australian Representatives
ROJONE, PTY LTD.
Tel: 02 9829 1555
E: sales@rojone.com.au
www.rojone.com.au

Region	United States	Europe, Middle East and Africa	Caribbean and Latin America	Canada and rest of the world
Telephone	USA: 1 800 263 3275	International: +44 (0) 1223 42 03 03	International: +1 905 726 7676	Canada: 1 800 263 3275 International: +1 905 727 0165
E-mail	salesusa@sinctech.com	salesuk@sinctech.com	salesla@sinctech.com	salescan@sinctech.com
Product Specification Sheet		SM600		Dated: 05-02-10

SM600-SWBSNF

Electrical Specifications

Frequency Range, MHz	746 to 2500
Gain (nominal), dBd (dBi)	unity (2.1)
Input VSWR (max)	1.5:1
Polarization	vertical
Impedance, Ω	50
Pattern	Omni-directional
Vertical beamwidth, degrees	60
Average Power Input (max), W	200
Lightning protection	DC ground
Bandwidth, MHz	1754

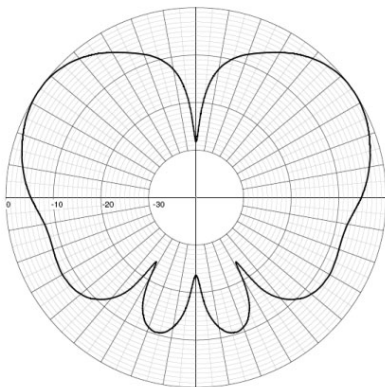
Mechanical Specifications

Connector	N (female)
Length/ Height, in (mm)	2 (50)
Width, in (mm)	5.8 (146)
Radome material	UV protected ABS
Weight, lbs (kg)	1.2 (0.5)
Radome Colour	Black

Environmental Specifications

Temperature range, °F (°C)	-40 to +140 (-40 to +60)
----------------------------	--------------------------

SINCLAIR TECHNOLOGIES



MEASURED RADIATION PATTERN
Vertical
Relative Gain - 10 dB per Division

SM600-SWBSNF

Region	United States	Europe, Middle East and Africa	Caribbean and Latin America	Canada and rest of the world
Telephone	USA: 1 800 263 3275	International: +44 (0) 1223 42 03 03	International: +1 905 726 7676	Canada: 1 800 263 3275 International: +1 905 727 0165
E-mail	salesusa@sinctech.com	salesuk@sinctech.com	salesla@sinctech.com	salescan@sinctech.com
Product Specification Sheet		SM600		Dated: 05-02-10