

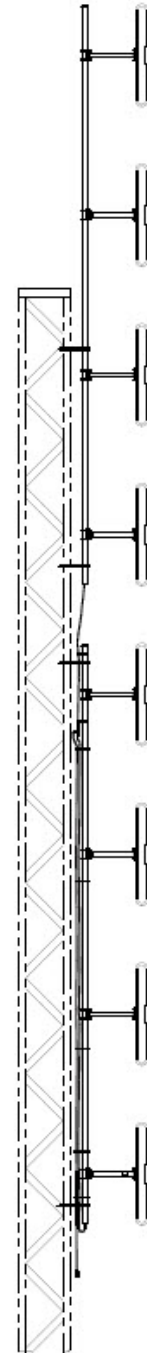
[< Home](#)
[< Family](#)

SD218-L - PIM Certified 8 dipole antenna, 9.5/10 dBd gain, low PIM, 118-225 MHz

- 9.5 dBd gain in elliptical (bi-directional) pattern (1/2 wave), 10 dBd gain in offset pattern (1/4 wave)
- Low PIM rating at -150dBc

The SD218-L series of antennas is unique in its high efficiency, low passive intermodulation, and exceptionally wide beamwidth covering the frequency ranges of 118-137 MHz, 138-174 MHz or 220-225 MHz at a VSWR of 1.5:1 or better. Because of its bandwidth and very low intermodulation response, the SD218-L is perfectly suited for multicoupled systems.

Model	Description	Pattern
SD218-SF1P2LDF	9.5 dBd gain, elliptical, N (male) connector, 118-138 MHz	Bi-directional
SD218-SF1P4LDF	10 dBd gain, offset, N (male) connector, 118-138 MHz	Offset
SD218-SF2P2LDF	9.5 dBd gain, elliptical, 138-174 MHz	Bi-directional
SD218-SF2P4LDF	10 dBd gain, offset, 138-174 MHz	Offset



1/2 wave shown



Australian Representatives
ROJONE, PTY LTD.
Tel: 02 9829 1555
E: sales@rojone.com.au
www.rojone.com.au

www.sinctech.com

Region	United States	Europe, Middle East and Africa	Caribbean and Latin America	Canada and rest of the world
Telephone	USA: 1 800 263 3275	International: +44 (0) 1223 42 03 03	International: +1 905 726 7676	Canada: 1 800 263 3275 International: +1 905 727 0165
E-mail	salesusa@sinctech.com	salesuk@sinctech.com	salesla@sinctech.com	salescan@sinctech.com
Product Specification Sheet		SD218-L - PIM Certified		Dated: 05-02-10

[SD218-SF1P2LDF](#)

[SD218-SF1P4LDF](#)

[SD218-SF2P2LDF](#)

[SD218-SF2P4LDF](#)

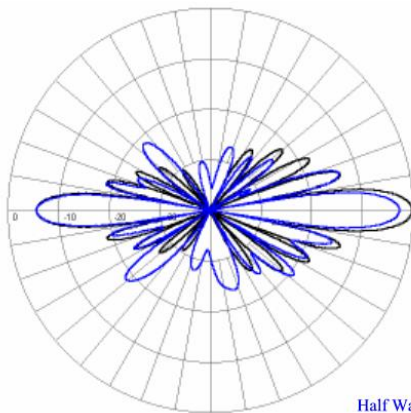
Electrical Specifications

Frequency Range, MHz	118 to 138	118 to 138	138 to 174	138 to 174
Gain (nominal), dBd (dBi)	9.5 (11.6)	10 (12.1)	9.5 (11.6)	10 (12.1)
Input VSWR (max)	1.5:1	1.5:1	1.5:1	1.5:1
Polarization	vertical	vertical	vertical	vertical
Pattern	Bi-directional	Offset	Bi-directional	Offset
Vertical beamwidth, degrees	9	9	9	9
Average Power Input (max), W	300	300		
Passive intermod. (2x20W, 3rd ord.), dBc	-150	-150	-150	-150
Lightning protection	DC ground	DC ground	DC ground	DC ground
Bandwidth, MHz	36	36	36	36

Mechanical Specifications

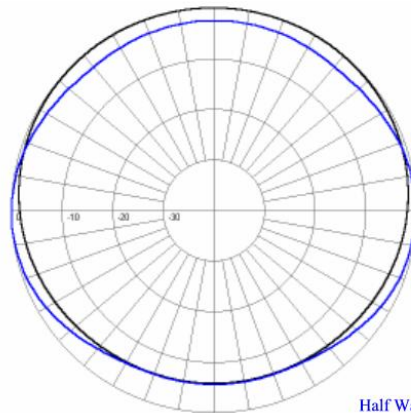
Connector	N (male)	N (male)	N (male)	N (male)
Length/ Height, in (mm)	404 (10262)	404 (10262)	480 (12192)	480 (12192)
Width, in (mm)	26 (660)	26 (660)	26 (660)	26 (660)
Depth, in (mm)	2.9 (74)	2.9 (74)	2.9 (74)	2.9 (74)
Base pipe diameter, in (mm)	2.4 (60)	2.4 (60)	2.4 (60)	2.4 (60)
Base pipe mounting length, in (mm)	72 (1829)	72 (1829)	72 (1829)	72 (1829)
Weight, lbs (kg)	90 (40.9)	90 (40.9)	90 (40.9)	90 (40.9)
Actual Shipping weight, lbs (kg)	125 (56.8)	100 (45.4)	200 (90.8)	200 (90.8)
Shipping dimensions, in (mm)	247x6x44 (6274x152x1118)	247x6x27 (6274x152x686)	300x24x7.2 (7620x610x183)	300x24x7.2 (7620x610x183)
FPE, ft² (m²)	8.4 (0.78)	8.4 (0.78)	8.4 (0.78)	8.4 (0.78)
Mounting hardware	clamps not supplied	clamps not supplied	clamps not supplied	clamps not supplied

www.sinctech.com



Elevation
Half Wave
Quarter Wave

SD218-SF1P2LDF



Azimuth
Half Wave
Quarter Wave

SD218-SF1P2LDF

Region	United States	Europe, Middle East and Africa	Caribbean and Latin America	Canada and rest of the world
Telephone	USA: 1 800 263 3275	International: +44 (0) 1223 42 03 03	International: +1 905 726 7676	Canada: 1 800 263 3275 International: +1 905 727 0165
E-mail	salesusa@sinctech.com	salesuk@sinctech.com	salesla@sinctech.com	salescan@sinctech.com
Product Specification Sheet		SD218-L - PIM Certified		Dated: 05-02-10