

[< Home](#)  
[< Family](#)

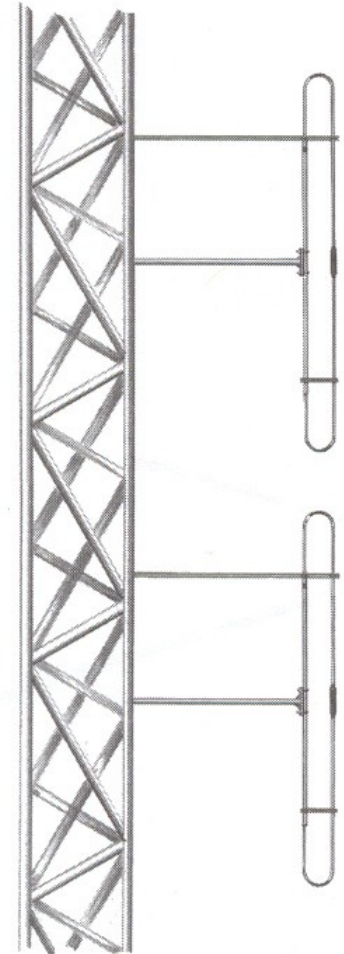
**SD112**

Exposed dipole directive antenna, 5.5 dBd gain, 30-76 MHz

- Covers 30-76 MHz in 10% bands
- 5.5 dBd gain, offset pattern (1/8 wave)
- 10% bandwidth for 1.5:1 VSWR
- 16.5% bandwidth for 2.0:1 VSWR

The SD112 is a two dipole array for side mounting on a supporting structure. The SD112 series is supplied with a special welded book and anti-torque support. Due to the many mounting possibilities, mounting hardware is not supplied with these antennas. Engineering assistance will be provided in the selection of proper hardware.

| Model                          | Description                                 | Pattern |
|--------------------------------|---|---------|
| <a href="#">SD112-SFXPASNM</a> | 5.5 dBd gain, N (male) connector, 30-76 MHz | Offset  |



www.sinctech.com



**Australian Representatives**  
**ROJONE, PTY LTD.**  
Tel: 02 9829 1555  
E: sales@rojone.com.au  
[www.rojone.com.au](http://www.rojone.com.au)

| Region                      | United States         | Europe, Middle East and Africa       | Caribbean and Latin America    | Canada and rest of the world                             |
|-----------------------------|-----------------------|--------------------------------------|--------------------------------|--|
| <b>Telephone</b>            | USA: 1 800 263 3275   | International: +44 (0) 1223 42 03 03 | International: +1 905 726 7676 | Canada: 1 800 263 3275<br>International: +1 905 727 0165 |
| <b>E-mail</b>               | salesusa@sinctech.com | salesuk@sinctech.com                 | salesla@sinctech.com           | salescan@sinctech.com                                    |
| Product Specification Sheet |                       | SD112                                |                                | Dated: 05-02-10  |

SD112-SFXPASNM

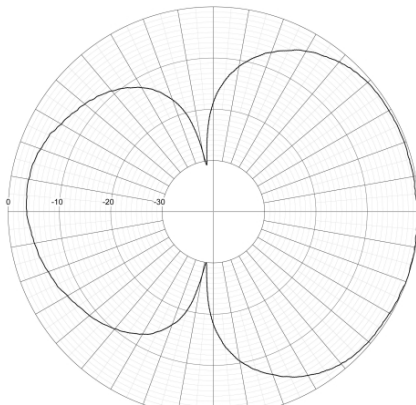
**Electrical Specifications**

|                              |           |
|------------------------------|-----------|
| Frequency Range, MHz         | 30 to 76  |
| Gain (nominal), dBd (dBi)    | 5.5 (7.6) |
| Input VSWR (max)             | 1.5:1     |
| Polarization                 | vertical  |
| Pattern                      | Offset    |
| Vertical beamwidth, degrees  | 34        |
| Average Power Input (max), W | 300       |
| Lightning protection         | DC ground |

**Mechanical Specifications**

|                                  |                         |
|----------------------------------|-------------------------|
| Connector                        | N (male)                |
| Length/ Height, in (mm)          | 473 (12014)             |
| Weight, lbs (kg)                 | 60 (27.2)               |
| Actual Shipping weight, lbs (kg) | 85 (38.6)               |
| Shipping dimensions, in (mm)     | 195x7x17 (4953x178x432) |
| Mounting hardware                | clamps not supplied     |

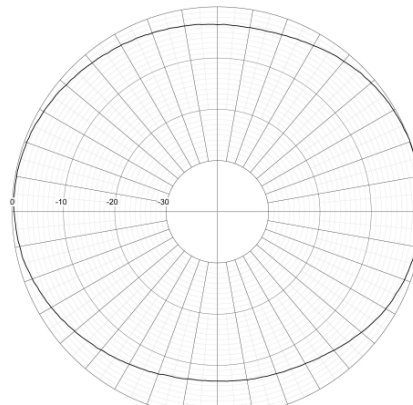
SINCLAIR TECHNOLOGIES



MEASURED RADIATION PATTERN  
Vertical  
Relative Gain - 10 dB per Division

SD112-SFXPASNM

SINCLAIR TECHNOLOGIES



MEASURED RADIATION PATTERN  
Horizontal  
Relative Gain - 10 dB per Division

SD112-SFXPASNM

| Region                      | United States         | Europe, Middle East and Africa       | Caribbean and Latin America    | Canada and rest of the world                             |
|-----------------------------|-----------------------|--------------------------------------|--------------------------------|--|
| Telephone                   | USA: 1 800 263 3275   | International: +44 (0) 1223 42 03 03 | International: +1 905 726 7676 | Canada: 1 800 263 3275<br>International: +1 905 727 0165 |
| E-mail                      | salesusa@sinctech.com | salesuk@sinctech.com                 | salesla@sinctech.com           | salescan@sinctech.com                                    |
| Product Specification Sheet |                       | SD112                                |                                | Dated: 05-02-10  |