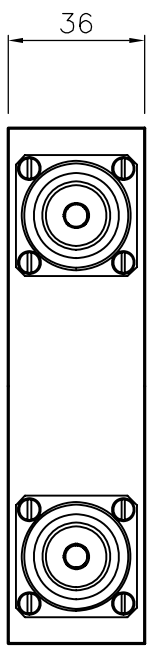
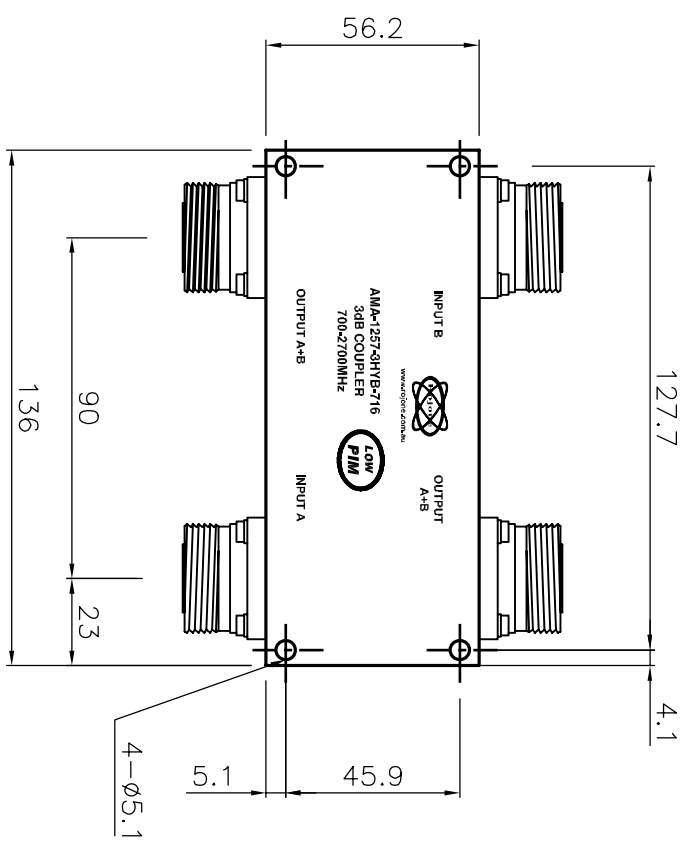


REV	REVISIONS
A	ISSI ZONE DESCRIPTION/REPER REQUEST
B	updated drawing no
c	Updated power to 500cw peak

3rd ANGLE PROJECTION THIS DOCUMENT AND THE DESIGN SHOWN THEREON IS THE PROPERTY OF ROJONE PTY LTD AND MUST NOT BE SOLD, LENT, GIVEN AWAY, COPIED, REPRODUCED OR OTHERWISE DIVULGED TO ANY THIRD PARTY OR USED FOR MANUFACTURE, OR ANY OTHER PURPOSE WITHOUT DIRECT WRITTEN PERMISSION OF ROJONE PTY LTD.



SPECIFICATIONS for AMA-1257-3HYB-716

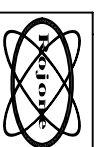
FREQUENCY RANGE: 0.7-2.7GHz
 COUPLER TYPE: 4 PORT DIRECTIONAL
 POWER HANDLING: 500W CW (@25°C)
 COUPLING VALUE: 3dB
 RETURN LOSS: <-18dB, -20dB (TYP)
 AMP BALANCE: <-0.5dB, 0.3(TYP)
 IM: <-150dBcc@34dBmx2
 -155dB (TYP)

INSERTION LOSS(THRU LINE): 3 to 3.5dBMAX 3.2 (TYP)

INSERTION LOSS (COUPLED LINE): COUPLING LOSS + DISSIPATIVE LOSS
 DISSIPATIVE LOSS: <-0.3dB (TYP)
 OPERATING TEMPERATURE: -40° TO +65° CELCIUS
 ENVIRONMENTAL CLASS: IP 65
 RF CONNECTOR: DIN 716 - F
 HUMIDITY: <-99% NO CONDENSATION
 WEIGHT: 820 GRAMS ALUMINIUM HOUSING (WITHOUT LOAD)
 1700 GRAMS BRASS HOUSING (WITHOUT LOAD)
 (AMA-1257-3HYB-716EN)

NOTES:

- 1/ ROJONE PART NO. DESIGNATION AMA-1257-3HYB-716.
- 2/ COUPLERS ARE DESIGNED FOR LOW INTERMODULATION OPERATION.
- 3/ ENVIRONMENTAL - ADD SUFFIX " -EN ", AMA-1257-3HYB-716EN (BRASS BODY).
- 4/ PRODUCTS ARE RoHS COMPLIANT.

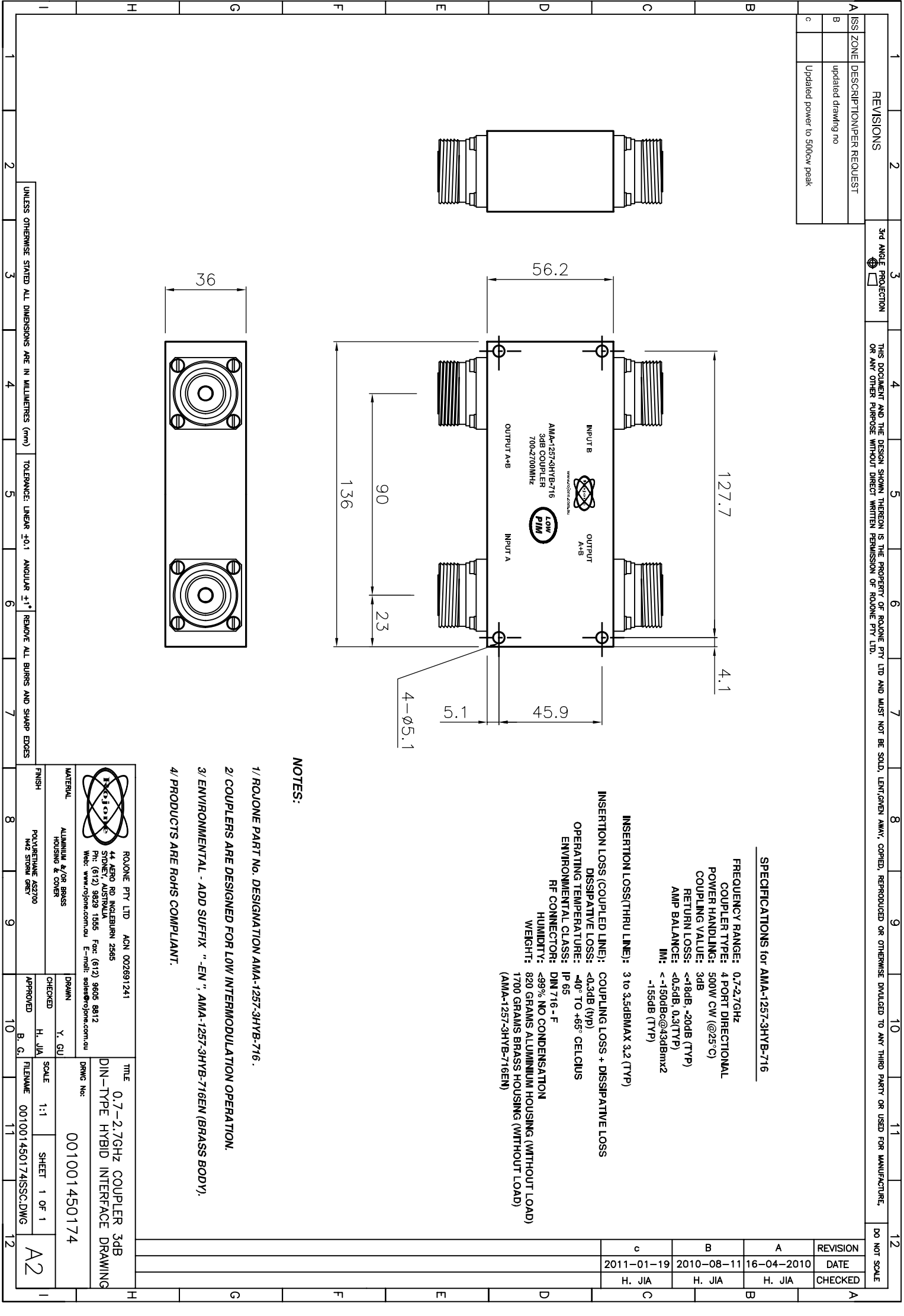


ROJONE PTY LTD ACN 002891241
 44 AERO RD INGLEBURN 2565
 SOUTH AUSTRALIA
 Ph: (012) 9829 1565 Fax: (012) 9805 9812
 Web: www.rojone.com.au E-mail: sales@rojone.com.au

TITLE: 0.7-2.7GHz COUPLER 3dB
 DIN-TYPE HYBRID INTERFACE DRAWING
 DWG No: 001001450174

MATERIAL	ALUMINIUM &/OR BRASS HOUSING & COVER	DRAWN	Y. GU	SCALE	1:1	SHEET	1 OF 1
FINISH	POLYURETHANE AS2700 M2 STORM GREY	CHECKED	H. JIA	FILENAME	001001450174ISSC.DWG		
		APPROVED	B. G.				

UNLESS OTHERWISE STATED ALL DIMENSIONS ARE IN MILLIMETRES (mm) TOLERANCE: LINEAR ±0.1 ANGULAR ±1° REMOVE ALL BURRS AND SHARP EDGES



REVISION	DATE	CHECKED
A	16-04-2010	H. JIA
B	2010-08-11	H. JIA
c	2011-01-19	H. JIA

A2