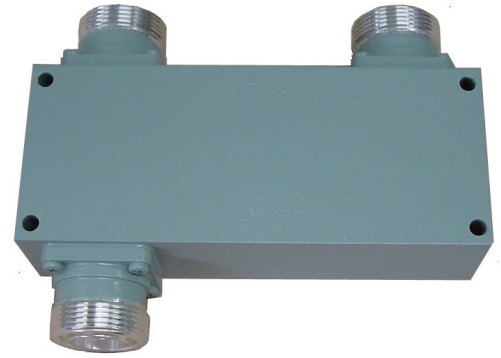




# AMA-2255-2-716EN

## 2-WAY HIGH POWER DIVIDER LOW IM



**AMA-2255-2-716EN is a low IM, high power, 2- way divider designed for high performance base station antenna systems.**

### Features

- SUPER LOW IM3
- HIGH POWER
- HIGH ISOLATION
- LOW I/O RETURN LOSS

### Specification

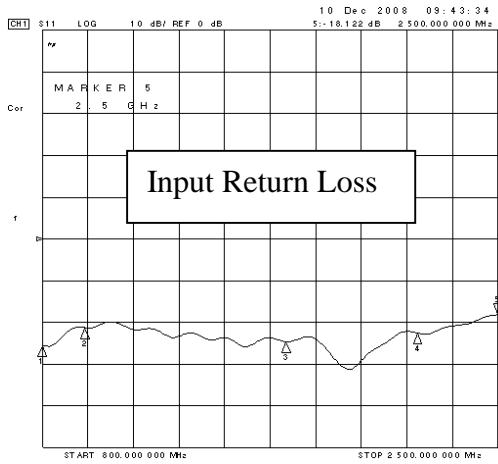
Op frequency Range	800-2500MHz
PIM3	< -155dBc (-165 to -175dBc typ) @ 43dBm x 2
Input RF Power	200w Max @ antenna VSWR < 1.5 : 1 100W Max @ antenna VSWR < 2 : 1
Input Return Loss	<-20dB
Output Return Loss	20dB typ
Through Loss	3.3 dB typ
Output Isolation	>20dB
RF Connectors	Din 7/16-F
Op Temp	-40 to + 65C
Op Humidity	100%
Material	Brass
Weight	1.8kg
Size	135 x 46 x 36mm

**ROJONE PTY. LIMITED – AUSTRALIA**

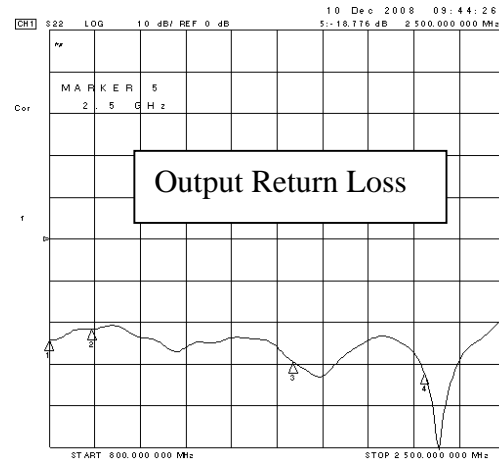
[sale@rojone.com.au](mailto:sale@rojone.com.au)

[www.rojone.com.au](http://www.rojone.com.au)

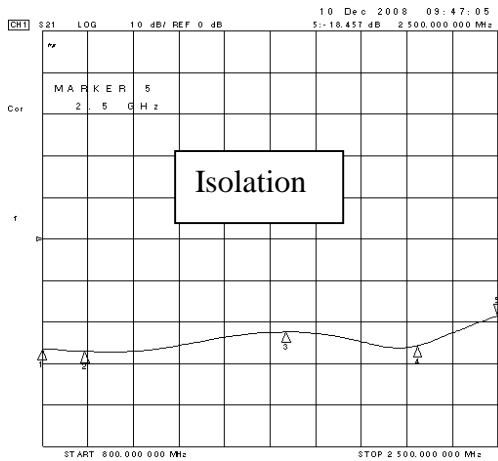
**Test Results:**



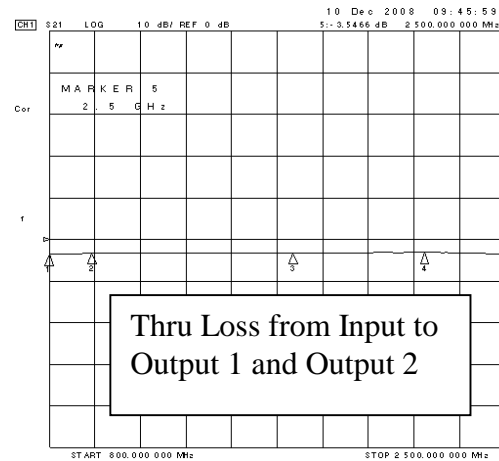
- CH1 Markers
- 1:-25.493 dB  
800.000 MHz
  - 2:-21.242 dB  
360.000 MHz
  - 3:-24.626 dB  
1.71000 GHz
  - 4:-22.543 dB  
2.20000 GHz



- CH1 Markers
- 1:-24.088 dB  
800.000 MHz
  - 2:-21.657 dB  
360.000 MHz
  - 3:-23.476 dB  
1.71000 GHz
  - 4:-32.191 dB  
2.20000 GHz



- CH1 Markers
- 1:-26.421 dB  
800.000 MHz
  - 2:-27.058 dB  
360.000 MHz
  - 3:-22.346 dB  
1.71000 GHz
  - 4:-25.630 dB  
2.20000 GHz



- CH1 Markers
- 1:-3.5630 dB  
800.000 MHz
  - 2:-3.3110 dB  
360.000 MHz
  - 3:-3.2638 dB  
1.71000 GHz
  - 4:-3.1201 dB  
2.20000 GHz

**Mechanical Layout:**

