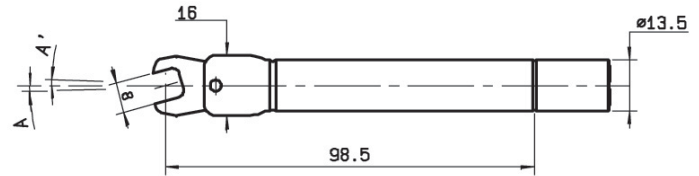
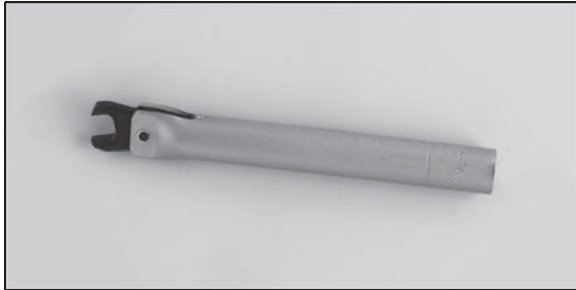
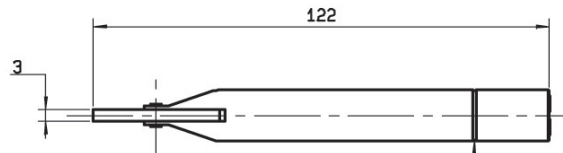


### TORQUE WRENCH 5 to 10 mm



A A' angular sweep approximately 2°



Gauge weight positioning groove for calibration of coupling torque

Part number	Accross flats (mm)	Coupling torque (N.cm)
R282 311 010	5.5 (.217)	63 to 70
R282 317 015		150
R282 318 000	6 (.236)	30
R282 318 010		58 to 62
R282 319 000	6.35 (.250)	60 to 80
R282 319 010		58 to 62
R282 320 000	8 (.315)	80 to 120
R282 320 010		100 to 110
R282 320 011		150
R282 320 020		200
R282 320 030		60
R282 320 031		70
R282 320 032		80
R282 320 040		40
R282 321 010	5 (.197)	63 to 70
R282 321 011		40
R282 321 020		200
R282 323 000	6.5 (.256)	80 to 120
R282 324 000	9.6 (.378)	80 to 120
R282 324 001		150
R282 324 002		170



Australian Representatives  
**ROJONE, PTY LTD.**

Tel: 02 9829 1555  
E: sales@rojone.com.au  
www.rojone.com.au