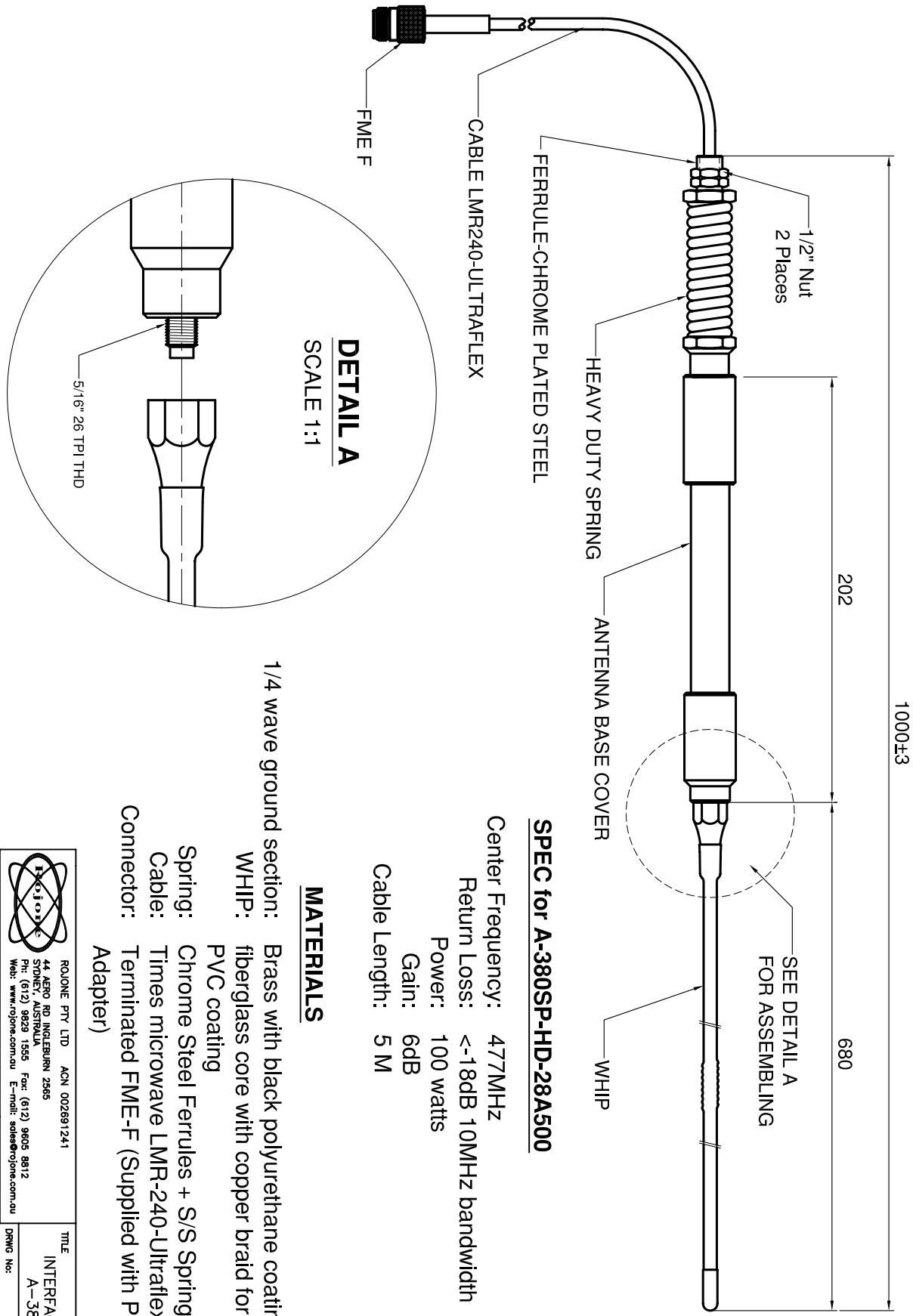


1	2	3	4	5	6	7	8	9	10	11	12
REVISONS		3rd ANGLE PROJECTION	THIS DOCUMENT AND THE DESIGN SHOWN THEREON IS THE PROPERTY OF ROLONE PTY LTD AND MUST NOT BE SOLD, LENT, GIVEN AWAY, COPIED, REPRODUCED OR OTHERWISE DIVULGED TO ANY THIRD PARTY OR USED FOR MANUFACTURE. DO NOT SCALE								
A	ISSI ZONE	DESCRIPTION PER REQUEST/DATE									
b		Updated spec: add plots									



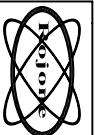
**DETAIL A**  
SCALE 1:1

**SPEC for A-380SP-HD-28A500**

- Center Frequency: 477MHz
- Return Loss: <-18dB 10MHz bandwidth
- Power: 100 watts
- Gain: 6dB
- Cable Length: 5 M

**MATERIALS**

- 1/4 wave ground section: Brass with black polyurethane coating
- WHIP: fiberglass core with copper braid for element - PVC coating
- Spring: Chrome Steel Ferrules + S/S Spring
- Cable: Times microwave LMR-240-Ultraflex
- Connector: Terminated FME-F (Supplied with PL 259 Adapter)



ROLONE PTY LTD ACN 002891241  
44 AERO RD INGLEBURN 2565  
SOUTH AUSTRALIA  
Ph: (012) 9829 1555 Fax: (612) 9805 8812  
Web: www.rolone.com.au E-mail: sales@rolone.com.au

TITLE  
INTERFACE DRAWING FOR ANT  
A-380SP-HD-28A500  
DRAWG No: 009001001261

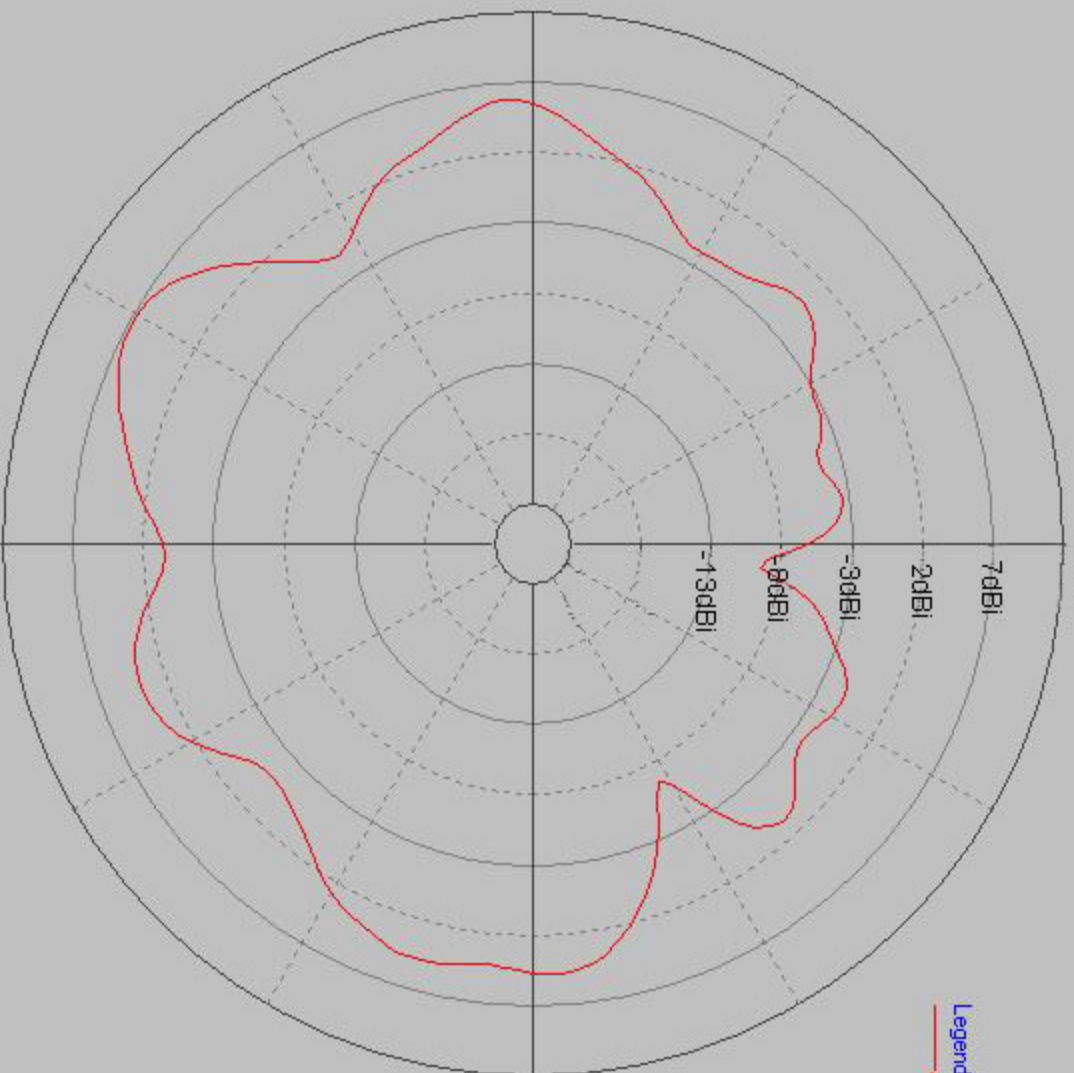
MATERIAL	FINISH	DRAWN	CHECKED	APPROVED	SCALE	SHEET	FILENAME
--	--	Y. GU	B. G.	APPROVED	1:2	1 OF 1	009001001261

UNLESS OTHERWISE STATED ALL DIMENSIONS ARE IN MILLIMETRES (mm) TOLERANCE: LINEAR ±0.1 ANGULAR ±1° REMOVE ALL BURRS AND SHARP EDGES

A3

0deg

Legend  
477.00(MHz)



90deg

270deg

180deg

0deg

8dB

3dB

-2dB

Legend  
477.00(MHz)

90deg

270deg

180deg

