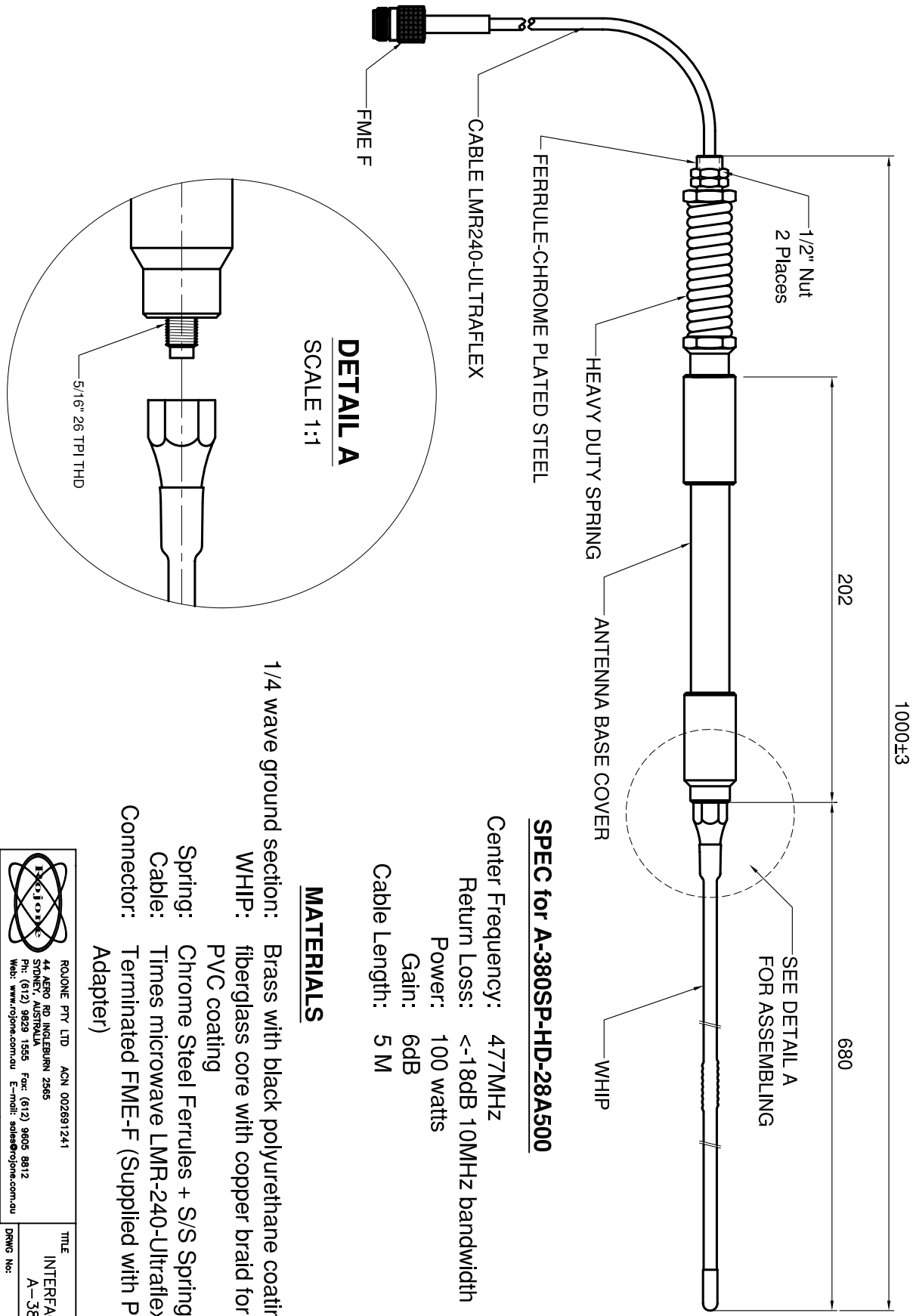


1	2	3	4	5	6	7	8	9	10	11	12
REVISONS		3rd ANGLE PROJECTION	THIS DOCUMENT AND THE DESIGN SHOWN THEREON IS THE PROPERTY OF ROLONE PTY LTD AND MUST NOT BE SOLD, LENT, GIVEN AWAY, COPIED, REPRODUCED OR OTHERWISE DIVULGED TO ANY THIRD PARTY OR USED FOR MANUFACTURE. DO NOT SCALE								
A	ISSI ZONE	DESCRIPTION PER REQUEST/DATE									
b		Updated spec: add plots									

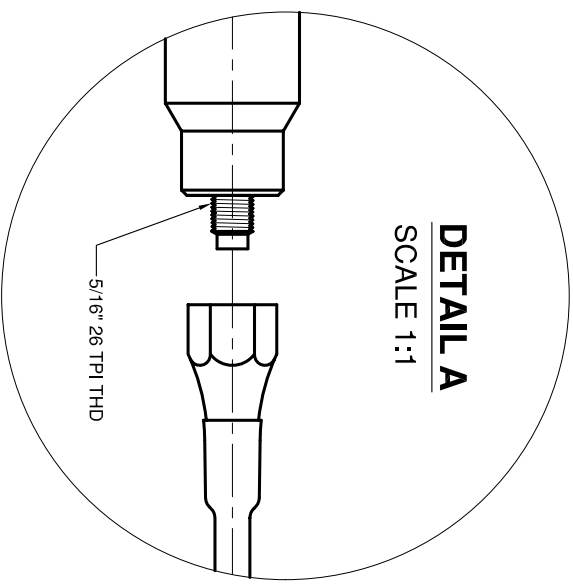


SPEC for A-380SP-HD-28A500

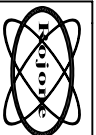
- Center Frequency: 477MHz
- Return Loss: <-18dB 10MHz bandwidth
- Power: 100 watts
- Gain: 6dB
- Cable Length: 5 M

MATERIALS

- 1/4 wave ground section: Brass with black polyurethane coating
- WHIP: fiberglass core with copper braid for element - PVC coating
- Spring: Chrome Steel Ferrules + S/S Spring
- Cable: Times microwave LMR-240-Ultraflex
- Connector: Terminated FME-F (Supplied with PL 259 Adapter)



DETAIL A
SCALE 1:1



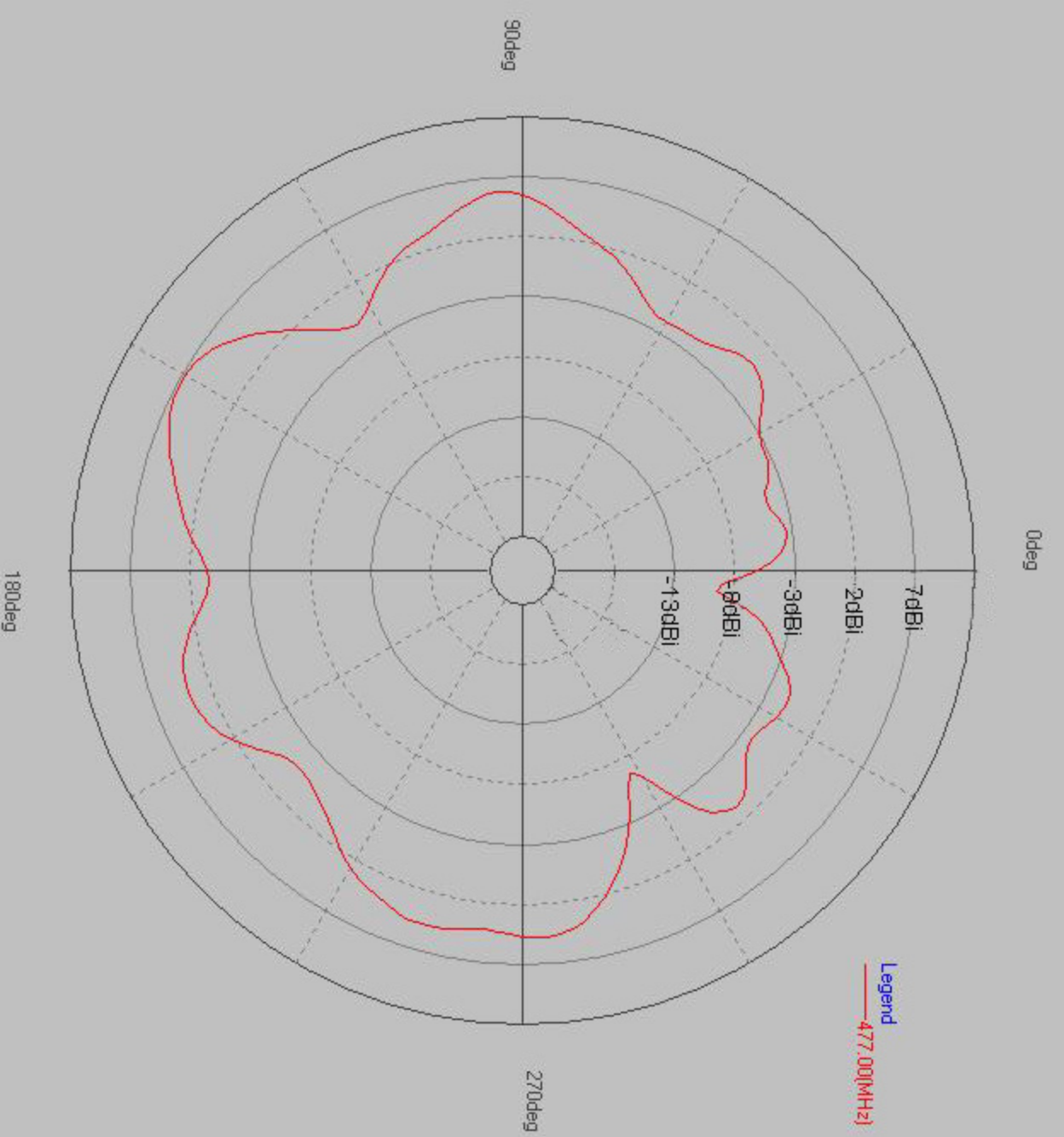
ROLONE PTY LTD ACN 002891241
44 AERO RD INGLEBURN 2565
SOUTH AUSTRALIA
Ph: (012) 9829 1555 Fax: (612) 9805 8812
Web: www.rolone.com.au E-mail: sales@rolone.com.au

TITLE
INTERFACE DRAWING FOR ANT
A-380SP-HD-28A500
DRAWG No: 009001001261

UNLESS OTHERWISE STATED ALL DIMENSIONS ARE IN MILLIMETRES (mm) TOLERANCE: LINEAR ±0.1 ANGULAR ±1° REMOVE ALL BURRS AND SHARP EDGES

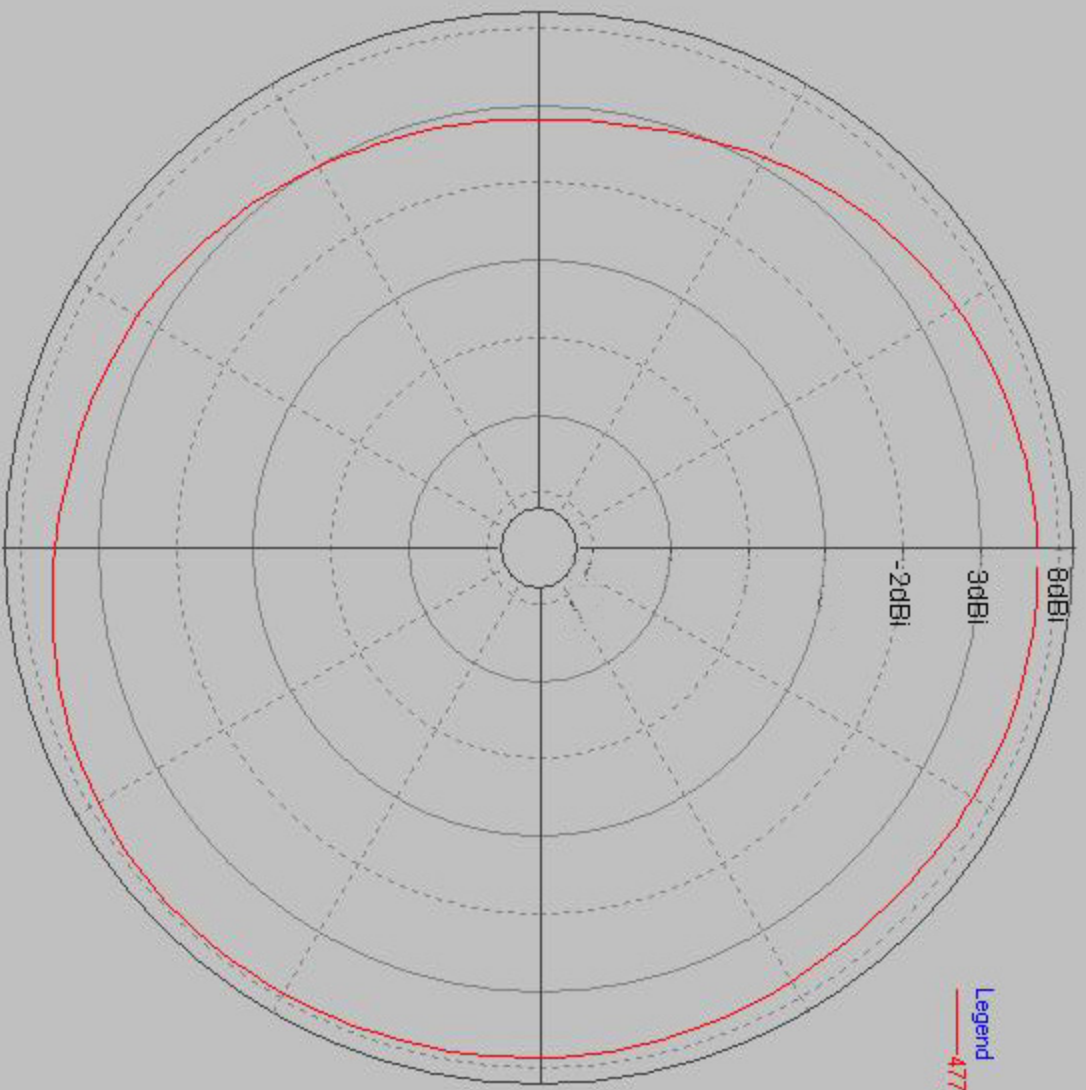
MATERIAL	FINISH	DRAWN	CHECKED	APPROVED	SCALE	SHEET	FILENAME
--	--	Y. GU	B. G.	APPROVED	1:2	1 OF 1	009001001261

A3



0deg

Legend
477.00(MHz)



30deg

270deg

180deg