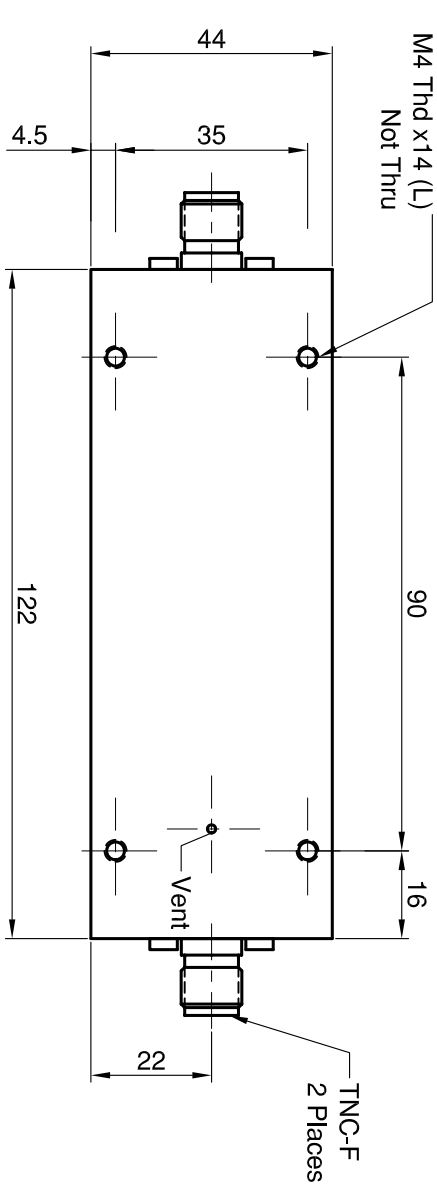
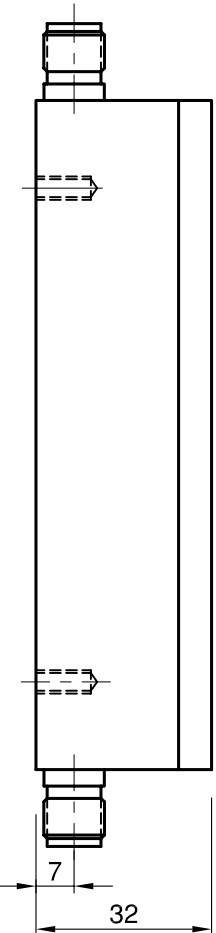
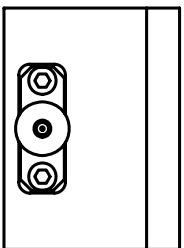
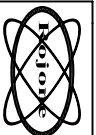


1	2	3	4	5	6	7	8	9	10	11	12
REVISIONS		3rd ANGLE PROJECTION	THIS DOCUMENT AND THE DESIGN SHOWN THEREON IS THE PROPERTY OF ROLONE PTY LTD AND MUST NOT BE SOLD, LENT, GIVEN AWAY, COPIED, REPRODUCED OR OTHERWISE DIVULGED TO ANY THIRD PARTY OR USED FOR MANUFACTURE. DO NOT SCALE								
ISSI ZONE	DESCRIPTION	PER REQUEST	DATE								



Specifications

Part Number: ROJ-154-35
 Frequency: DC - 6 GHz
 Attenuation: 0 - 35 dB in 1 dB Step
 Attenuation Accuracy: +/- 0.8 dB (DC - 2 GHz)
 +/- 1.5 dB (DC - 3 GHz)
 +/- 2 dB (DC - 6 GHz)
 Attenuation Response: <1.5 dB (DC - 3 GHz)
 <2.5 dB (DC - 6 GHz)
 VSWR: 1.25 : 1 Typ (DC - 3 GHz)
 1.85 : 1 Max (DC - 6 GHz)
 Impedance: 50 Ohms
 Power Rating: 2 Watts Avg, 20 Watts Peak
 Op Temperature: -30 to +80 °C
 Humidity: <100 %
 IP Rating: IP 66
 RF Connector: TNC F
 Size: 122x44x32+Conn.



ROLONE PTY LTD ACN 002891241
 44 AERO RD INGLEBURN 2965
 SLDG CT, INGLEBURN 2965
 WA, (012) 9829 1555 Fax: (012) 9805 8812
 Web: www.rolo.com.au E-mail: sales@rolo.com.au

TITLE: INTERFACE FOR ROJ-154-35
 35dB VAR ATTENUATOR WITH CASE
 DWG No: 001004001035

MATERIAL	ALUMINIUM ALLOY 6061 HOUSING	DRAWN	Y. GU	SCALE	1:1	SHEET	1 OF 1
FINISH	NICKEL PLATE	CHECKED	H. JIA	FILENAME	001004001035ISSA.DWG		
		APPROVED		A3			

UNLESS OTHERWISE STATED ALL DIMENSIONS ARE IN MILLIMETRES (mm)
 TOLERANCE: LINEAR ±0.1 ANGULAR ±1° REMOVE ALL BURRS AND SHARP EDGES